

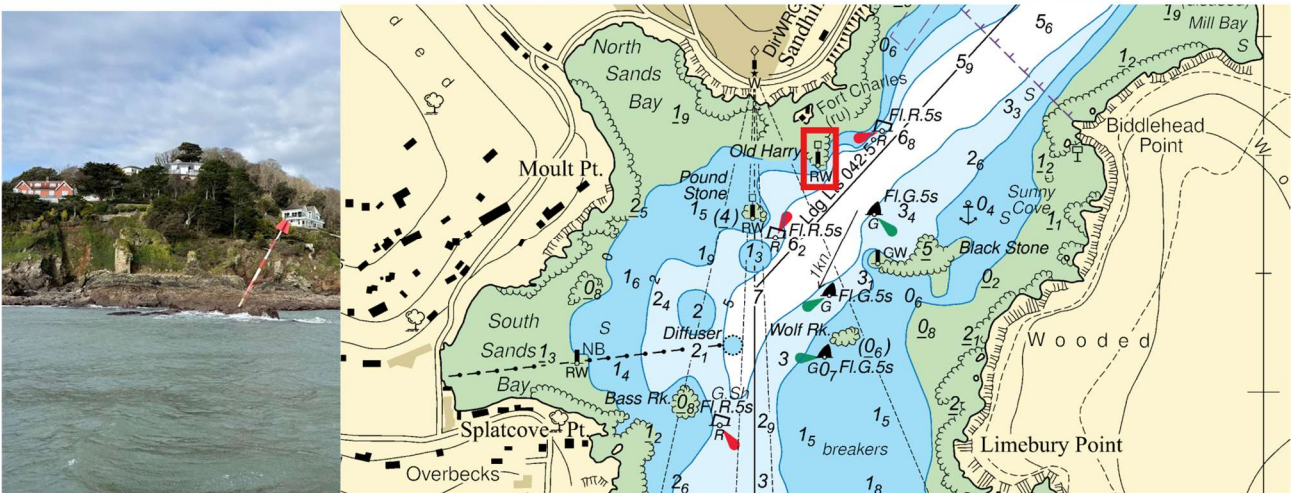
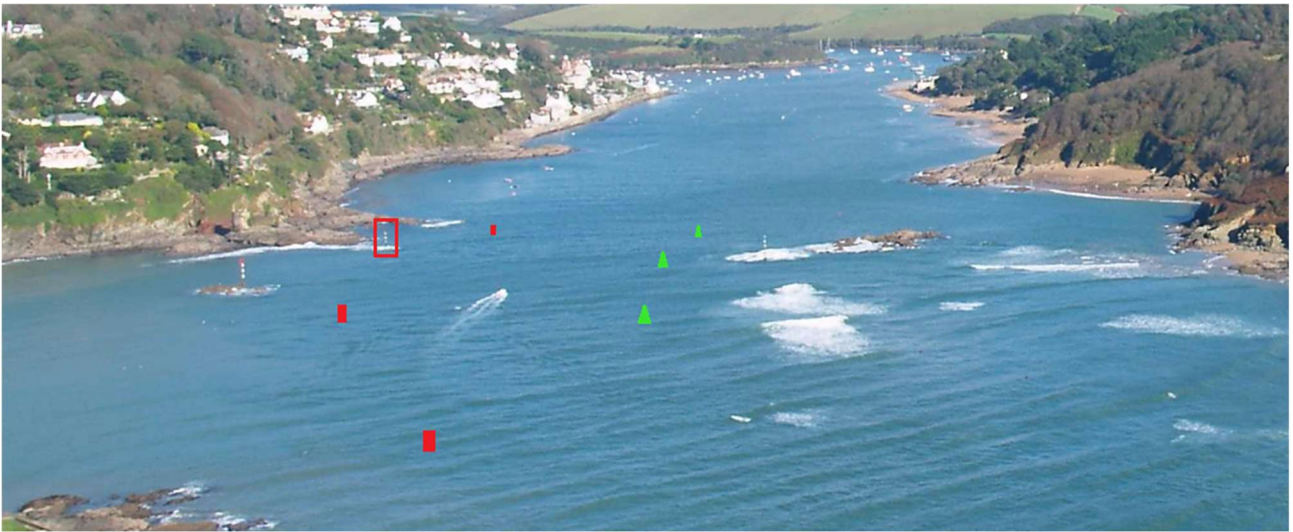
SOUTH HAMS DISTRICT COUNCIL

SALCOMBE HARBOUR – KINGSBRIDGE ESTUARY

LOCAL NOTICE TO MARINERS NO 03 OF 2026

Defective Navigation Beacon

Mariners are advised that the 'Old Harry' port hand navigation beacon (pole) in position 50°13.690N 003°46.581W (marked within the red box on the chart and photograph below) just south of Fort Charles castle, is currently leaning and less visible at high water. Please continue to use the 3 port and 3 starboard lit buoys to navigate in this area.



NOT TO BE USED FOR NAVIGATION © Crown Copyright and/or database rights. Reproduced by permission of The Keeper of Public Records and the UK Hydrographic office www.ukho.gov.uk/copyright

Cancel this LNTM 28th February 2026.

C Sims-Stirling
Salcombe Harbour Master

salcombe.harbour@swdevon.gov.uk

www.salcombeharbour.co.uk

01548 843791

Harbour Office, Whitestrand, Salcombe, Devon.TQ8 8BU

5th February 2026