

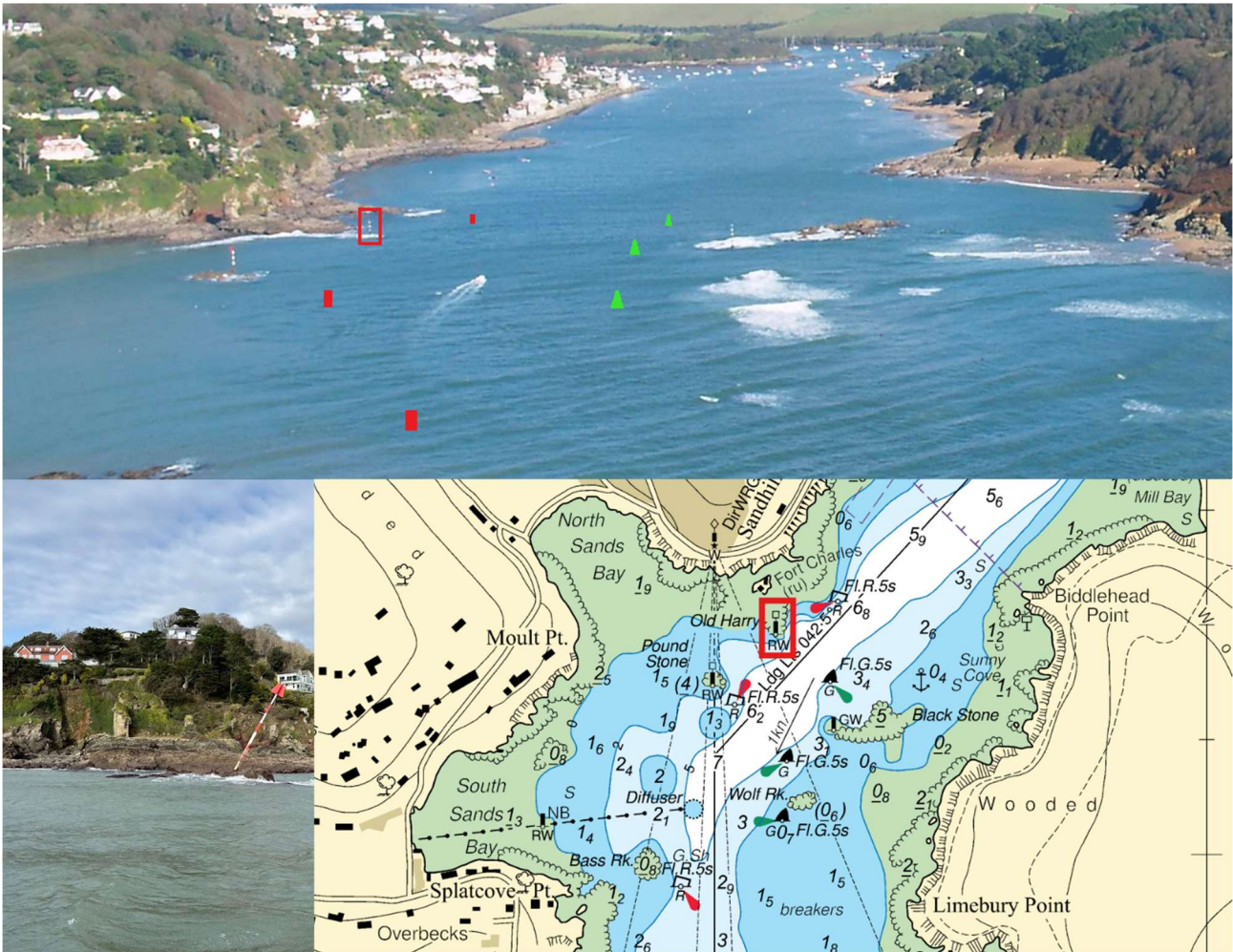
SOUTH HAMS DISTRICT COUNCIL

SALCOMBE HARBOUR – KINGSBRIDGE ESTUARY

LOCAL NOTICE TO MARINERS NO 04 OF 2026 replacing LNTM NO3 OF 2026

Discontinued Navigation Beacon

Mariners are advised that in consultation with Trinity House, the General Lighthouse Authority for England, the 'Old Harry' port hand navigation beacon (pole) in position 50°13.690N 003°46.581W (marked within the red box on the chart and photograph below) just south of Fort Charles castle, is to be discontinued and not replaced. The navigable channel continues to be identifiable by the 3 port hand and 3 starboard hand lit buoys.



NOT TO BE USED FOR NAVIGATION © Crown Copyright and/or database rights. Reproduced by permission of The Keeper of Public Records and the UK Hydrographic office www.ukho.gov.uk/copyright

Cancel this LNTM 31st December 2026.

C Sims-Stirling
Salcombe Harbour Master

salcombe.harbour@swdevon.gov.uk
www.salcombeharbour.co.uk
01548 843791

Harbour Office, Whitestrand, Salcombe, Devon.TQ8 8BU

18th February 2026