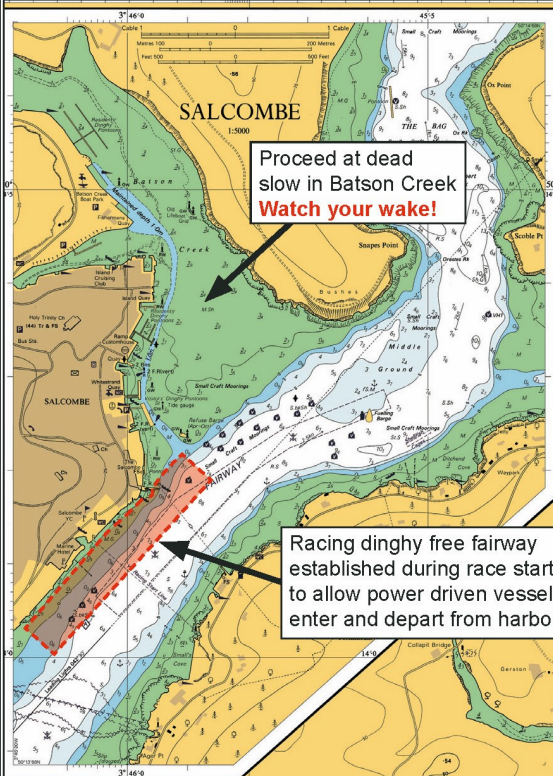




Salcombe Harbour & Kingsbridge Estuary



The estuary is a marine Site of Special Scientific Interest and Local Nature Reserve. Please join us in caring for this special area - byelaws apply. There is a 5 metre tidal range within the estuary. The areas coloured green on the chart dry out at low water. Beware of strong tidal streams. If you ground, stay with your boat and call the Harbour office.



Proceed at dead slow in Batson Creek
Watch your wake!

Racing dinghy free fairway established during race starts to allow power driven vessels to enter and depart from harbour.

6 Knots

Beware of mud on falling tides - harbour dries at low water.

Saltstone
No Landing - Habitat vulnerable to trampling.

Watch your wake through moorings, **Always proceed at a safe speed.**

8 Knots
6 Knots

Quiet areas - good bird watching but **Watch your wake.**

Beware of mud on falling tides - harbour dries at low water.

Eelgrass
Avoid damaging protected eelgrass beds by stopping engines and paddling to shore.
Anchor with extreme care!

Boats to approach North Sands & South Sands with caution. Keep to port, swimming area to starboard

Blackstone, Wolf Rock, & The Bar.
Beware of swell and breaking waves.

Beaches on this shoreline are in private ownership. Boats approach with extreme caution.
Allow for swimmers in the water!

Sunny Cove Anchorage
Beware of breaking waves, strong tidal streams and rip tides!

Limit of 8 knot speed limit

Water skiing, wakeboards, the towing of donuts etc. are all prohibited within the harbour limits.



South Hams District Council

Not to be used for Navigation

© Crown Copyright and/or database rights. Reproduced by permission of the Controller of Her Majesty's Stationery Office and the Hydrographic office (www.ukho.gov.uk)