

Salcombe Harbour Guide 2024



including
2024
Tide
Table

Lifejackets & kill cords
save lives
please use them correctly!

Quick Reference

EMERGENCY	Dial 999 for Police, Fire, Ambulance and Coastguard. Non urgent matters 101 In an emergency at sea or along the coast ask for the Coastguard or call UK Coastguard on VHF CH 16 or 01326 317575 by phone
AIRPORT	Exeter International, Honiton, EX5 2BD. 01392 367433 Newquay, St Mawgan TR8 4RQ. 01637 860600
ATM	Cash Zone alongside Whitestrand car park and within the Fortescue Inn
BUS	Shadycombe Road (opposite Health Centre), Tally Ho 01548 853081, First National 01752 402060
CHURCH	Church of England, Roman Catholic
CUSTOMS	0300 200 3700 DRUG HOTLINE 0800 595000
DENTIST	Island Street, Salcombe TQ8 8FE. 01548 844844, Various Kingsbridge 853568, 852165, 856161
FUEL BARGE	VHF CH 6, 07801798862, 7 days a week 0830-1700 April-Sept
HEALTH CENTRE	Salcombe, Shadycombe Road TQ8 8DJ. 01548 842284 Kingsbridge, Cookworthy Road TQ7 1AE. 01548 853551
HOSPITALS	Derriford, Crownhill, PL6 8DH Plymouth. 01752 202082 Kingsbridge, Plymouth Road, TQ7 1AT. 01548 852349
ILLEGAL FISHING	Devon IFCA 01803 854648, 07740 175479 and Harbour Office
INTERNET	Salcombe Library 01548 843423, various pubs and cafes
LIBRARY	Salcombe, Cliff House (beside Yacht Club) 01548 843423, Kingsbridge, Ilbert Road TQ7 1EB. 01548 852315
PHARMACY	Boots, Fore Street, Salcombe. 01548 842146 Boots, Prince of Wales Road, Kingsbridge. 01548 852354 Well, Quay Pharmacy, The Quay, Ilbert Road, TQ7 1EB. 01548 857158
POLLUTION	Harbour Office, Environment Agency 0800 807060 (24 hour service)
POST OFFICE	Salcombe Spar, Loring Road, TQ8 8BL, 01548 842836 Kingsbridge McColls, Fore Street, TQ7 1AB 01548 852348
PUBLIC TRAVEL	Traveline 0871 200 2233
TOURIST INFO	Salcombe 01548 843927, Kingsbridge 01548 853195
TRAINS	Passenger info 0845 7484950 Totnes, Plymouth stations www.nationalrail.co.uk
VETS	Kingsbridge 01548 852766, 01548 853322
WEATHER	Harbour Office - posted daily outside National Coastwatch Institution NCI Prawle Point. 01548 511259, VHF 65
WILDLIFE	RSPB 01392 432691 RSPCA 0300 1234999
YACHT CLUB	Cliff House, Cliff Road, Salcombe TQ8 8JQ. 01548 842593

HARBOUR OFFICE - Whitestrand, Salcombe, Devon. TQ8 8BU
Mon-Thu 0900-1645, Fri 0900-1615. March 30th - Sept 15th: Sat 0900-1615, Sun 0900-1300.
01548 843791, VHF CH 14, salcombe.harbour@swdevon.gov.uk

BATSON BOATPARK - Gould road, Salcombe, Devon TQ8 8DU.
01548 843791, b.boatpark@swdevon.gov.uk

SALCOMBE HARBOUR EMERGENCY OUT OF HOURS 01803 867034



**South Hams
District Council**

Welcome ..

... to Salcombe Harbour - a friendly, welcoming safe haven and eco-port set in one of the most beautiful locations in the south west.

The harbour reaches from just south of The Bar, a sandbar stretching across the entrance of the ria (submerged river valley), all the way up to Kingsbridge. Its high water quality and peaceful surroundings are enjoyed by a number of water users: bathers, canoeists, stand-up paddleboards, dinghies, yawls, yachts, power boats and super yachts - either individually or as part of one of the many colourful and exhilarating competitive regattas.

The harbour can be extremely busy, particularly in the high season, so please navigate with care and consideration, adhere to the speed limits (6 or 8 knots), minimise wake, wear lifejackets, and connect a kill cord when helming a vessel with an outboard engine. For this reason swimming across the harbour is prohibited, please enjoy the water in close proximity to the beaches.

A KILLCORD COULD SAVE YOUR LIFE, AND OTHERS, SHOULD YOU FALL OVERBOARD!

The harbour staff look forward to welcoming you to Salcombe Harbour and would be delighted to answer any questions or queries that you might have.

Enjoy your visit

*Cameron Sims-Stirling,
Harbour Master*

CONTENTS

2	Navigation
3	Approaches Chart
4	Rules of the road
5-6	Keeping safe
7	Towing your trailer safely
7	Forums
8-9	How to moor your boat
10-11	Marine Security
12	Visitor Moorings
13	Le Port
14	Harbour Facilities
15	Visitors Charges
16	Byelaws
17	Harbour Taxi
18	Harbour Dues & Resident facilities
19	Tide and Water Access
20	Beaches
21	Things to do & Events
22-24	RNLI
25-30	Environmental Respect
31	Pontoon Diagrams
32-33	Harbour Map
34-35	Harbour Chart
37-39	Tide Tables
40-41	The Wind Project
42	Adverts

Navigation



Visiting yachtsmen are encouraged to obtain navigational information available from official publications e.g. Admiralty Pilot and Charts or one of the many yachtsmen's pilots, guides or almanacs available.

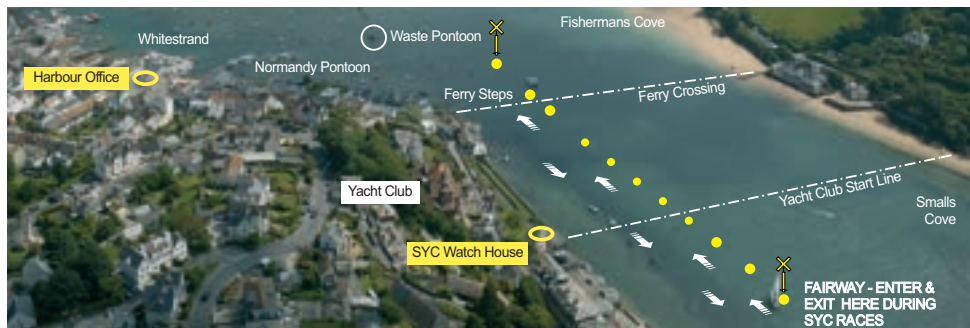
RELEVANT ADMIRALTY CHARTS Nos. 28 & 1613, Imray Y48, Y43 & C6, OS 202 & OL20

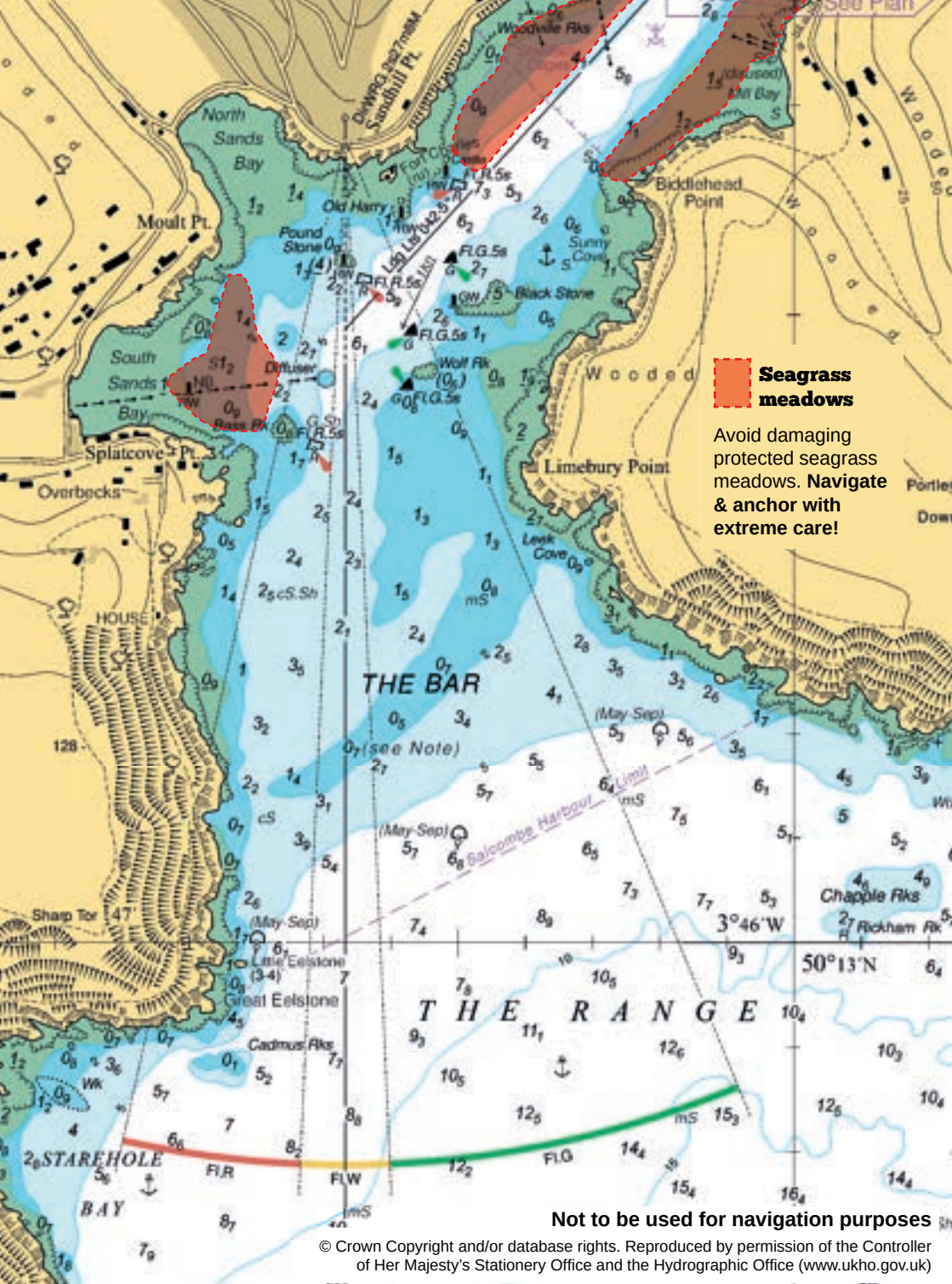
The harbour lies between Bolt Head to the west and Prawle Point to the east. Salcombe's Bar, made famous in Tennyson's "Crossing of the Bar", stretches south westerly across the entrance from Limebury Point on the east side. This sand bar has a least depth of 0.5 metres LAT and should not be negotiated on an ebb tide with strong onshore winds or swell. The entrance leading line (000°T) is marked by a red and white striped pole with red topmark on the Poundstone Rock, with a second beacon behind it on Sandhill Point, which is white with a horizontally striped red and white diamond topmark. The rear beacon displays a Directional Flashing light WRG.2s, of which the white sector 357°-002°T shows the leading line. Once Blackstone Rock is abeam to starboard, the main fairway course of 042°T can be set, marked by transit lights near to Scoble Point. The navigable channel through the turn from 000 T to 045 T is marked by six lateral buoys. Three port hand buoys at Bass Rock, Poundstone and Castle with FL.R.5s lights and three starboard hand buoys at Wolf Rock, Blackstone South and Blackstone North with FL.G.5s lights.

Racing Dinghy Free Fairway

During a dinghy race start sequence a boatlane/racing dinghy free fairway will be established between Millbay/Woodville Rocks and the East Portlemouth Ferry crossing. This is denoted by a line of yellow buoys on the town side of the channel with a yellow cross at either end and is active when the SYC Watch House displays yellow flashing lights. All non-racing traffic is requested to proceed within this lane maintaining a good look out.

This is a 6 KNOT ZONE - please keep wake to a minimum.





Seagrass meadows

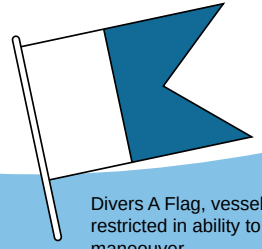
Avoid damaging protected seagrass meadows. Navigate & anchor with extreme care!

Not to be used for navigation purposes

© Crown Copyright and/or database rights. Reproduced by permission of the Controller of Her Majesty's Stationery Office and the Hydrographic Office (www.ukho.gov.uk)

Rules of the Road

How to navigate safely within the harbour



Divers A Flag, vessel restricted in ability to maneuver. **STAY WELL CLEAR**

DEFINITIONS

Port

is the left hand side of the vessel.

Starboard

is the right hand side of the vessel.

Navigation Marks

which side to pass.

Upon entering harbour -

RED MARKS

(Port Hand Mark)



leave it to port (on the left)

GREEN MARKS

(Starboard Hand Mark)



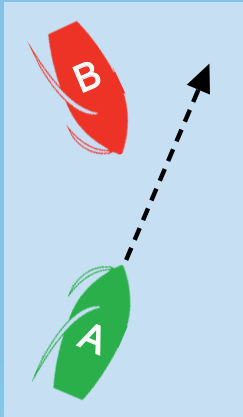
leave it to starboard (on your right)

SPECIAL MARKS

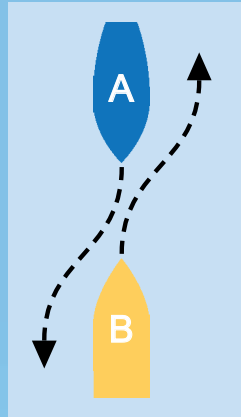
(indicating special area or feature)



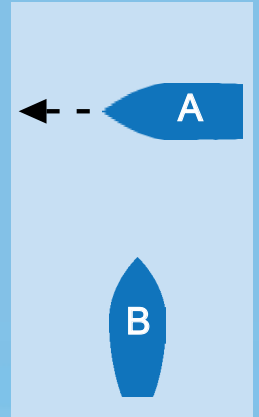
Within the confined spaces of the Estuary, safety for all our water users is paramount. Please refer to the "Rules of the Road" details below when using your boat in close proximity to other boats.



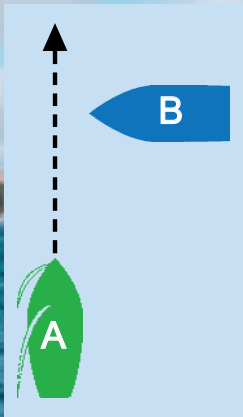
Rule 12 (a) (i)
B gives way, different tacks. Vessel on port tack gives way.



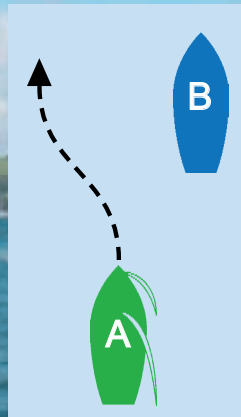
Rule 14 (a)
Motor vessels alter course to starboard.



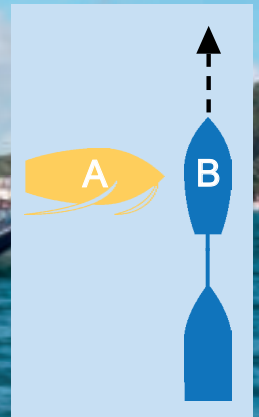
Rule 15
Motor vessels B gives way.



Rule 18 (a) (iv)
A stands on. Power gives way to sail.



Rule 13
An overtaking vessel (power or sail) must keep clear.



Rule 18
A gives way. Towing and towed vessels restricted in ability to manoeuvre.

Tips to keep your boating trip safe



EMERGENCY -
Contact UK COASTGUARD
VHF #16DSC or call 999



Wear correctly fitted life jackets/buoyancy aids



Power boat helms should always wear a kill cord



Know your harbour speed limits

Within the busier areas of moorings and pontoons there is a 6 KNOT limit, but this is not a target



Be 'wake aware' - Keep your wake low in the harbour



Navigate with due care and attention



Do not navigate under the influence of drink or drugs

stickers available in the harbour office

Over the past year, our log books of everyday incidents have been analysed and used as part of our safety management system to identify key areas of concern. This leads us to, where possible, help educate harbour users to try to improve safety and, in turn, reduce the likelihood or severity of these incidents.



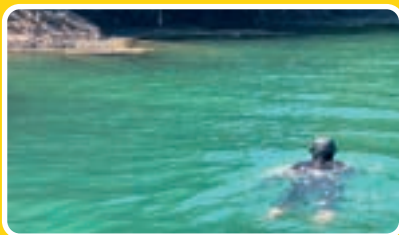
INCIDENT REPORTING

It is very important for the harbours Marine Safety Management System that all incidents are reported, including near misses, otherwise particular safety concerns cannot be correctly identified or mitigated against. Bye-Law extract 14 Notification of Collisions: the master of a vessel which has been involved in a collision with any vessel or property shall as soon as reasonably practicable report the occurrence to the Harbour Master and thereafter provide the Harbour Master with full details in writing.



HARBOUR DUES AND IDENTIFICATION

Kayaks, SUP's and other small craft used to navigate around the harbour require registration and Harbour Dues. Please ensure they are identifiable (by their sticker) so we can reunite lost vessels with their owner and confirm that the owner is safe and not a 'Man Over Board!'



SWIMMING

Swimming across the harbour channels is prohibited for your own safety. We welcome swimming in the vicinity of the beaches/shoreline, where this is not directly into a busy fairway of boating traffic. Please be aware that, at a glance, your head may only look like a mooring buoy!

WATER QUALITY

The harbour has a number of designated bathing beaches and live information can be obtained from the South West Water (WaterFit Live) and Environment Agency (SwimFo) websites and the Surfers Against Sewage SSRS App.



Towing your trailer safely

Please ensure your vehicle is capable of towing the laden / wet weight of your boat and ALL of the below are in place on the road and the slipway.

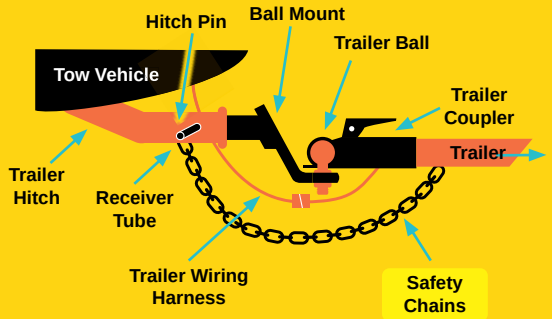
TOW BALL AND CONNECTIONS

Check that:

- the trailer is correctly coupled to the towball or pin - follow the manufacturer's advice
- the coupling height is correct
- the 7 or 13 core cable and plug is not damaged

BREAKAWAY CABLE / SAFETY CHAIN

Use a breakaway cable or secondary coupling. This engages the trailer's brakes (if fitted) or stops the trailer if it becomes detached from the car.



Check that:

- the cable is not worn or damaged
- there's enough slack in the cable so that it does not accidentally apply the brakes
- the cable will not drag on the ground when you're driving

Have your say

Harbour Community Forums

To ensure that the Harbour Board has strong and direct links with harbour users, local communities and other external organisations with an interest in the Salcombe-Kingsbridge Estuary, a formal consultation mechanism has been set up. Five not-for-profit community groups have registered their interest to work with the Council in relation to its future harbour activities and are recognised as 'Harbour Community Forums' forming part of a formal consultation mechanism for the Board.

Should you wish to participate in or become part of a forum please contact:

- The Salcombe Kingsbridge Estuary Conservation Forum:
[Ken Carter 01548 857 106 - \[krcarter@carken.plus.com\]\(mailto:krcarter@carken.plus.com\)](mailto:Ken Carter)
- The Kingsbridge Estuary Boat Club:
chairman@kebc.co.uk
- South Devon and Channel Shell Fishermen:
[07480 858260 - \[sdandshellfishermen@gmail.com\]\(mailto:sdandshellfishermen@gmail.com\)](tel:07480 858260)
- Kingsbridge and Salcombe Marine Business Forum:
[Kate Allen 01548 706 706 - \[kate.allen@fineststays.com\]\(mailto:kate.allen@fineststays.com\)](tel:01548 706 706)

How to moor your boat

All moorings require you to fix your boat to the chain or buoy making a primary attachment with your own equipment, indicated by the yellow lines.



S.H.A. mooring configuration must not be altered but may be added to with your own equipment being mindful this does not increase the scope of the mooring.

Foreshore (drying) mooring

Pick up hand/pick up buoy and cleat off aboard lifting rope to secure boat to chain with your own warp or karabina. The length of chain is designed to be raised to the waters surface to attach to.



Dan buoy mooring

Pick up hand/pick up buoy and cleat off aboard lifting rope to secure boat to chain with your own warp or karabina as per foreshore mooring.



Deepwater mooring

Connect your own warps/chain to the shackle/eye/swivel on top of the mooring buoy.

Shackles and thimbles will help reduce wear on ropes when attaching to the buoy.

NB: All swinging moorings have a swivel as part of their construction.





Fore and aft mooring

Connect your own warps to both bow and stern points from securing points aboard. The span rope between the buoys can be used to help position the boat but not to take the weight.



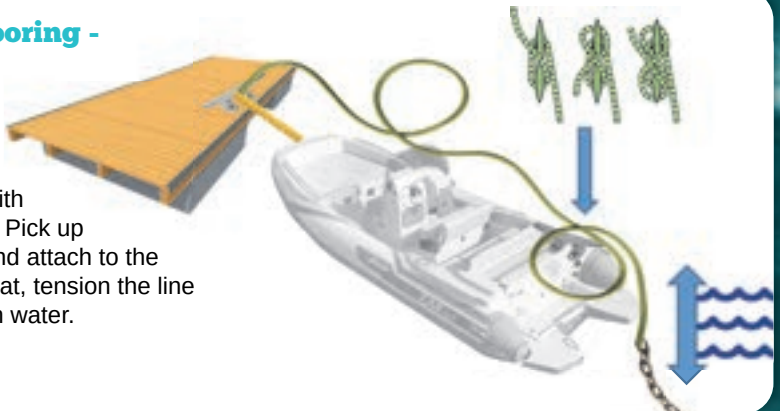
Pontoon mooring - alongside

Connect your boat to the pontoon cleats with your own warps. A bow and stern line will hold the boat into the pontoon whilst spring lines will prevent the boat moving forward or backward.



Pontoon mooring - stern line

Connect your boat to the pontoon cleat from the bow with your own warp. Pick up the stern line and attach to the back of your boat, tension the line to allow for high water.



Marine Security

Reporting incidents to the police

If you are the victim of boat theft, call the police immediately on 101. Check to make sure that your boat is still seaworthy and hasn't been badly damaged. And, if you can, check that neighbouring boats haven't been broken into as well.

If your call is an emergency, i.e. a threat to life, or if a crime is in progress, call 999 immediately.

Make sure you take as much information as possible, such as serial numbers, when reporting a crime.



Boat Watch

This is a community scheme. It operates in the same way as a Neighbourhood Watch scheme. The scheme is run by the community, for the community, and is supported by a number of agencies such as the police, fire service and local councils.

Boat Watch is linked locally, to the National Maritime Project Kraken, which delivers enhanced counter-terrorism vigilance with the aim of increasing public safety. Contact details for

Kingsbridge Estuary Boat Club Page 7.

Lock it - Mark it - Alarm it

101@devonandcornwall.pnn.police.uk

Security checklist:

- ✓ Don't leave anything loose in the cockpit or on the deck
- ✓ Always put your valuables in a strong, fixed locker and secure with a quality deadlock or padlock
- ✓ Take your personal and vessel papers with you – don't leave them on board
- ✓ Don't leave your home address on show
- ✓ Don't leave your keys in the ignition – always take them with you
- ✓ Keep your boat keys separate from your engine keys
- ✓ Make sure your curtains are closed so no-one can look in
- ✓ Ensure all unused ropes, fenders and other items are out of sight in your cockpit lockers and cupboards
- ✓ Make sure that your life raft and outboard motor are secure, as these are valuable and attractive to boat thieves
- ✓ If you're leaving your boat on a trailer for the winter consider putting it on blocks
- ✓ Keep your list of serial numbers up to date
- ✓ Take pictures of your property so that it can be easily identified if recovered.



**PROJECT
KRAKEN**

BOATS ARRIVING AT UNUSUAL TIMES?



REPORT IT. LET'S SORT IT.

To report anonymously, call the Coastal Crime Line powered by Crimestoppers on **0800 011 3304**. In an emergency, always call **999**.


Border Force

Powered by
Crimestoppers.

 **NCA**
National Crime Agency

ACT

**ACTION
COUNTERS
TERRORISM**



Visitors Mooring Information

Visitors from sea

Swinging moorings are available off the town between Mill Bay and the Fuel Barge. Visitors' buoys are marked with a "V" and state maximum length, up to 9m on orange buoys, over 9m on yellow buoys. A large visitors' pontoon with yellow pile caps is also available in "The Bag" to the north west of Scoble Point, offering good shelter from prevailing weather conditions. Anchorages adjacent to town include off Town/Fishermans Beach and Smalls Cove (avoiding the Yacht Club racing start line when appropriate). An anchorage further from town is available north of "The Bag" where the residents moorings finish, in the vicinity of the Saltstone. Anchoring is prohibited in the middle of fairways and near to ferry or cable crossings. Overnight walk-ashore berths are bookable at Whitestrand pontoon outside commercial hours, generally for 2 vessels between 1900 and 0800, draught/tide dependant.

Short stays alongside Normandy pontoon (eastern side) in the entrance to Batson Creek are available for water and provisions but are restricted to half an hour at busy times. The shoreside (western side) of Normandy Pontoon provides tender berthing for up to 3.65m LOA.

Assistance can be obtained from "Salcombe Harbour" VHF radio CH 14, office 01548 843791.

Customs

If you are leaving or entering the UK on a pleasure boat of any kind, you are required to submit a pleasure craft report. Visit spcr.homeoffice.gov.uk and complete the simple, one-stop digital form up to 24 hours before you depart. Yachtline 033 123 2012.

Animals

Vessels from foreign ports with animals on board which have not entered the country at a designated port via a recognised route or carrier are not permitted to berth alongside the quays or land the animals.

Visitors from land

Drying-out mud moorings suitable for craft up to 6 metres may be booked in advance by the week and options for up to 8 metres are also available but more limited. The booking of these moorings is subject to the payment of annual resident Harbour Dues. Moorings are also available from other private boatyards. Please contact the Harbour Office from January 2nd to book for the 2024 season.

Kingsbridge - a harbour within a harbour

If your draft is less than 2 metres, your LOA is less than 11 metres and you are prepared to take the ground, why not visit the busy market town of Kingsbridge at the head of the estuary. Alternatively, hire a boat or use your tender for the beautiful 3.5 mile trip from Salcombe to Kingsbridge.

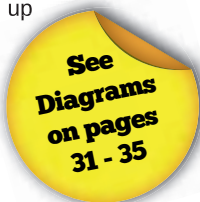
Kingsbridge creek is navigable 2½ hours either side of high water as the basin dries out. Follow the channel north of the Saltstone, which is marked by red and white Port Hand marker poles, meandering NNW to Kingsbridge.

As you enter Kingsbridge you will be rewarded with a vibrant market town and access to a number of facilities including supermarkets, quayside leisure centre where showers are available, cinema, tourist information centre and a wide range of shops. Street markets take place on Tuesdays and Thursdays and a local Farmers Market takes place on the Quay on the first Saturday of each month.

Visiting vessels can use the middle section of the main pontoon on the western side of the basin. There are additional berths against lean to piling on the sea wall north west of the Pontoon.

Kingsbridge also offers a quay with a launching slipway adjacent to the large car park. Vessels up to 1 metre draught can be slipped dependent on the tide.

Before proceeding to Kingsbridge please check berthing availability with the Harbour Office (not available Oct-Mar) and note that visitor mooring fees and harbour dues are payable.





Renseignements pratiques

Bienvenue à Salcombe où nous espérons que vous passerez un séjour agréable. Le Personnel du Port sur l'eau et au Bureau du Port à Whitstrand se fera un plaisir de vous fournir tout renseignement désiré.

Mouillages pour les visiteurs

Situés à proximité de la ville, entre l'hôtel Salcombe Harbour et la barge à combustible. Les bouées pour les visiteurs sont généralement colorées en jaune et marquées d'un "V" et de leurs longueurs maximales. Un grand ponton situé dans "The Bag", au nord-ouest de Scoble Point, est à la disposition des visiteurs.

Les plaisanciers sont expressément priés de ne pas ancrer au milieu du chenal, près du traversier ni à proximité du passage des câbles. Mouillages recommandés devant Fishermans Cove, Smalls Cove (évitant la ligne de départ des courses du Yacht Club) et à l'entrée de Frogmore Creek. Vous pouvez demander l'assistance à l'ancrage auprès des bateaux "Harbour Master". Celles-ci sont équipées de Radio V.H.F (Chaîne d'écoute 14). Le Personnel du Port patrouille celui-ci sont entre 7 h et 23h pendant les mois d'été. Une patrouille de sécurité assure les heures restantes (de 23 h à 7 h).

Le ponton normandy pour visiteurs

Cette installation située dans le chenal excavé face à Whitstrand a une profondeur

minimale de 1 mètre, selon les données de la carte marine, et son but est de permettre aux plaisanciers en visite d'embarquer des provisions, de faire le plein d'eau douce et de visiter Salcombe.

Durée maximale d'amarrage en Normandie: 1/2 heure

Pas d'accostage entre 19h et 7h. L'intérieur de ce ponton est réservé aux bateaux de visite. Ces bateaux doivent porter le nom du bateau-mère.

Ordures

Vous trouverez les bennes à recyclage sur le ponton situé face à Normandie et aussi sur le ponton visiteur. Cette benne à ordures est réservée à l'usage exclusif des plaisanciers et il est recommandé de l'utiliser plutôt que de rapporter les ordures à terre.

Douches

Vous trouverez des douches au Whitstrand et Salcombe Yacht Club, Cliff Road, Salcombe. Les codes pour les douches sont imprimés sur votre reçu.

Service de vedettes de taxi

Veillez appeler "Harbour Taxi" sur la Chaîne 12. Voir page 9 de ce guide pour dates et heures de service.

Harbour Facilities

Water	Fresh water is available at Normandy Pontoon and Batson Quay. During June, July and August fresh water is available on the Visitors' Pontoon in the Bag between 1000 & 1100 daily.
Showers	Salcombe Harbour Authority offer two individual cubicles at Whitestrand (code on receipt). Alternatively, Salcombe Yacht Club is happy for visiting yachtsmen to use their showers situated at Cliff House.
Refuse	We request that all harbour users recycle as much of their waste as possible. Recycling points are located afloat opposite Normandy Pontoon and on the Visitors' Pontoon in the Bag. Afloat bins are only provided for waste generated afloat.
Recycling	We separate our waste for recycling: <ul style="list-style-type: none"> ● Glass bottles & jars ● Paper & cardboard ● Batteries ● Plastic & cans ● Waste Oil ● General waste for landfill
Commercial Refuse	Please contact the Harbour Office if you have commercial waste to dispose of.
International Catering Waste	We are required to enforce the rules on handling International Catering Waste landed in the UK. International Catering Waste (ICW) is any food waste landed from vessels that have operated outside the EU. If since being in your charge the vessel has travelled outside the EU, you need to speak to a member of the harbour staff on arrival and will need to complete a declaration regarding ICW.
Holding Tank Pump Out	Black water pump out facility is provided free of charge at high water alongside Batson Quay, please contact the Harbour Office to arrange.
Lift Out	The Harbour Authority operates a slipway hoist with a lifting capacity of 10 tonnes. For further information contact the Harbour Office.
Scrubbing of Hulls	Boats wishing to scrub their hull should contact the Harbour Office to book a lift. To minimise pollution within the Site of Special Scientific Interest scrubbing can only take place over the grid at Batson.
WiFi	WiFi is available in local cafes, bars and the yacht club.
Fuel	Diesel and Petrol are available from the Fuel Barge, which operates on VHF 6 call sign "Fuel Barge" or 07801798862.
Facilities for Sailors with Disabilities	A hoist is available on Batson and Kingsbridge pontoons and will be made available on request. Although these are the only dedicated facilities we offer for sailors with disabilities, should you have a special requirement, please let us know and we will try our best to accommodate you.
Marine Services	There are a range of marine services available in Salcombe, many of which advertise in this guide: <ul style="list-style-type: none"> ● Sailmakers ● Marine Electronics ● Chandlers ● Riggers ● Marine Engineers ● Boat Builders

Visitors arriving by sea Charges

Salcombe's charges for vessels visiting from sea are staggered over the course of the year, based on daily Harbour Dues at £1.00 per metre inc VAT and daily Mooring Fee at £1.00 per metre inc VAT for swinging moorings and isolated pontoons. Vessel lengths are rounded up to the nearest metre.

Facility/Dates and charges

Anchorage (year round) – £1.00 per metre (Harbour Dues only)

Moorings (isolated swinging buoys and pontoons, may be rafted)

- 1st October to 31st March – £1.00 per metre (Harbour Dues only, irrespective of berthing on moorings)
- 1st April to 31st May and 1st September to 30th September – £1.50 per metre (Harbour Dues and half price Mooring Fee)
- 1st June to 31st August – £2.00 per metre (Harbour Dues and Mooring Fee)

All lengths rounded up to the nearest metre, charging based on overnight stays day by day - no weekly discount. Short stay price available.

Alongside/walk-ashore berths (when available), no rafting – An extra £1 per metre on top of the above charging structure

Flotillas (a minimum of six boats) **(not during the summer school holidays)** – Craft attending events such as Owners' Club or Yacht Club races, cruises or rallies will only be facilitated by prior arrangement where advanced payment is made en bloc by the organising body.



Byelaws and Information

The Salcombe Harbour Act of 1954 extends over all the waters of the estuary, which means that, for everyone's benefit, the "Rule of the Road" and the Harbour Byelaws must be observed.

Harbour Byelaws extract

Made by virtue of powers conferred on the Council by virtue and in pursuance of the provisions of the Pier and Harbour Order (Salcombe) Confirmation Act 1954 and of the Harbours Docks and Piers Clauses Act 1847 and of all other powers enabling them in that behalf.

5. **Anchoring.** Must be in designated areas.
8. **Not to Lie Alongside Others.** Vessels must not double berth on resident moorings unless advised to do so by the Harbour Master.
9. **Obstruction of Others.** Vessels shall not interfere with access to pier, jetty, wharf, landing steps, landing place or hard without the permission of the Harbour Master.
14. **Notification of Collisions, etc.** Any vessel in a collision, stranded, or a danger to other vessels, shall report to HM asap.
18. **Vessels to have names marked on them**
19. **Registration of Vessels.** All vessels must be registered with HM and display a valid registration sticker.
31. **Intoxicated or Disorderly Persons.** No person shall be in a state of intoxication through drink or drugs or shall use any threatening, abusive, indecent, obscene, profane or offensive language or behave in a riotous, disorderly, indecent or offensive manner to the annoyance or hindrance of any other person.
42. Vessels not to be made fast to navigation buoys or marks nor to the seaward side of Whitestrand pontoon and if any contact has been made shall report incident to HM.
43. **Vessels to Navigate with Care** and at a speed which does not cause injury or discomfort.
45. **Speed.** No powered vessel shall exceed eight knots through the water unless HM permission obtained. There is a six knot zone from the Salcombe Harbour Hotel to the Saltstone and in the Kingsbridge Basin.

47. **Persons under 16 Years of Age** may not operate power-driven vessels capable of over 8 knots unless RYA qualified or accompanied by a senior.

48. **Water-skiing, Aquaplaning, Parascending, Personalised Watercraft, Power Boards, Water Bikes and Aqua Scooters etc.** may not operate within the harbour for the purpose of water-skiing, aquaplaning, parascending or any similar waterborne or airborne activity.

Towing donuts and bananas is also prohibited within the harbour with persons on board.

PWC's (Personal Water Craft) are considered vessels and must comply with International Regulations for preventing collision at sea and Harbour Byelaws. PWC's are to proceed at DEAD SLOW speed until clear of harbour limits. Wet bikes are not permitted within the Harbour.

During the months of July and August cruising yachts are requested not to sail inside the harbour.

Windsurfing is prohibited between the Salcombe Harbour Hotel and the Fuel Barge.

Swimming across the harbour fairways and in the middle of the channels is prohibited. Caution must be exercised swimming off the beaches, staying close to the shore. Diving is also prohibited within the harbour limits, unless specific permissions and operations have been sanctioned by the Harbour Master.

Owners of Powerboats who may be lacking in experience are encouraged to gain appropriate qualifications e.g. RYA National Powerboat Certificate or Advanced Powerboat Course.

Insurance

All craft using the Estuary must be covered by insurance for third party liabilities. The current level of third party insurance required is £3,000,000. Failure to maintain this insurance cover will result in the withdrawal of mooring/launching facilities.

Check your wash at all times - navigate with care and consideration, the speed limit is not a target and a safe speed might be much less so as to reduce wake to a minimum in busy areas.





The Harbour Authority runs a seasonal harbour taxi service between Whitestrand pontoon and moored vessels. The area of service extends south to Sunny Cove anchorage, north to the Saltstone anchorage and includes Southpool creek up to the end of the deep water moorings and Batson creek up to the Batson Boat Park (map page 32). It can be contacted directly by calling 'Salcombe Harbour Taxi' on VHF channel 12 or phoning the onboard mobile 07807 643879. Alternatively pop into the harbour office or phone 01548 843791. State clearly yacht name, buoy number/location and number of passengers.

N.B. The harbour staff reserve the right to alter the Schedule of normal hours when exceptional or operational circumstances apply, such as during severe weather.

As a service to the public, the harbour taxi will run to and from East Portlemouth on the hour after the East Portlemouth Ferry has finished, at 1900, 2000, 2100 and 2200 providing bookings have been made in advance for trips from the East Portlemouth side. The service to East Portlemouth is weather dependent and may be cancelled without notice if the weather conditions deteriorate.

Please ensure that you are issued with and retain a ticket. During busy periods, staff will endeavour to collect passengers as soon as possible. Out of season, October through April, pre-booking of your Taxi will reduce waiting time.

NORMAL OPERATING HOURS 2024

January 2nd - March 24th	Weekdays	09:00, 11:00, 14:00 & 16:00 (4 trips)
March 25th - March 28th	Everyday	09:00 - 16:30
March 29th - September 15th	Everyday	08:00 - 23:00*
September 16th - September 27th	Everyday	09:00 - 16:30
September 28th - December 19th	Weekdays	09:00, 11:00, 14:00 & 16:00 (4 trips)

CHARGES PER PERSON:

- **£1.50** - Off Town
- **£2.00** - S. Pool Lake, The 'Bag'
- **£3.00** - Above Tosnos Point and East Portlemouth
- **50p** - Accompanied children under 16 years of age to all destinations

YACHT TAXI CARD:

- Discounted Taxi Swipe Cards: **£20 or £40** credit valid for all locations, saving up to 1/3 of individual cost

* the dates/extent of the full taxi shift (including evening hours) will be dependent on operational requirements and the weather

Harbour Dues & Resident facilities



Harbour Dues

Harbour Dues are levied to enable the Harbour Authority to fulfil its statutory duties. This includes the conservancy of the harbour, maintenance dredging, regular hydrographical surveys, navigation marks and beacons, and the enforcement of harbour byelaws etc. It also includes the fulfilment of our responsibilities within the Port Marine Safety Code including the training of staff, oil spill response and the port waste management plan.

All boats residing on annual facilities are required to pay annual Harbour dues based on boat length and engine horsepower. This is also applicable to all vessels launching from land into the harbour including paddleboards, kayaks and personal water craft (jet ski etc). A daily payment is available for short stays. Please ensure your Harbour Dues sticker is prominently displayed and not obscured whilst your boat is not in use. In purchasing your Harbour Dues you are confirming you hold appropriate third party insurance to £3,000,000 to cover the use of your vessel and mooring.



Resident moorings

Salcombe Harbour Authority manages the majority of mooring facilities in the harbour. As a municipal port and part of South Hams District Council (SHDC) we lease the fundus/seabed from the Duchy of Cornwall and manage the allocation of all mooring facilities, apart from those leased or owned directly by private boatyards/individuals.

Those who pay Council Tax to SHDC are welcome to join our waiting lists which are subdivided into:

- Foreshore pontoons; Batson, Victoria Quay and Kingsbridge
- Foreshore moorings; various swinging mooring locations
- Deep water moorings/pontoons; Off town, Bag and Southpool
- Other shore side tender storage; various Boatpark spaces or dinghy racks

Provided that you remain a SHDC Council Tax payer, allocations will only occur where an applicant reaches the top of a particular waiting list (which may take many years) and has a suitable boat that can be accommodated on such available facility. Facilities are renewed annually and require retention the year beforehand, should your facility be relinquished you will no longer hold a position on the waiting list and must reapply.

Tide and Water Access

High Water	05 hours 23 minutes before Dover
Maximum range	5.7 metres
Mean range (Springs)	4.7 metres
Mean range (Neaps)	2.2 metres

Tide Tables for Salcombe Harbour and Kingsbridge Estuary are printed in this publication and obtainable from local chandlers and stationers.

These are all considerably affected by wind conditions and barometric pressure.

Batson Creek Boat Park + Slipway

There is a car, boat and trailer park off Gould Road in Batson Creek, with an attendant on duty during the season. Car/Boat Park spaces can be booked in advance on a weekly basis, sat-sat, or arranged on a daily basis with the attendant upon arrival - 01548 843791, email: b.boatpark@southhams.gov.uk

The Batson Boat Park Slipway also provides launching at almost all states of the tide for trailable small craft, unlike the other drying slipways around the harbour. Security cameras monitor the whole boat park area and have been enhanced with new infrared capability and fast retrieve hard drives. The trailer park is locked overnight to prevent unregulated access.

Slipway Guidelines

Slipways can be extremely dangerous areas, please follow these guidelines to reduce risks and improve everyone's safety.

- PLEASE be considerate to other slipway users at all times. Safety is paramount.
- Use the one-way system within the boatpark to reduce congestion.
- **When towing trailers, ensure that the safety chain or loop is connected at all times.**
- A maximum of 10 minutes is permitted while using the slipway. If you require assistance please see the attendant.
- Inflation of dinghies is not permitted on the slipway. An inflation area has been provided for this purpose and a pump is available - see boat park attendant.
- Use of the slipway is exclusively for the launch and retrieval of vessels. Please prepare your craft in the designated area.
- Personnel not involved directly in launching and recovering vessels should keep clear of the slipway. A pedestrian accessway and bridge to the Batson Slipway pontoon should be used to access afloat craft without traversing the slipway.
- Berthing on Batson Slipway pontoon is restricted to loading and unloading only, with crew in attendance, overnighing berthing is prohibited.

Beaches



East Portsmouth side - Fishermans, Smalls, Mill Bay & Sunny Cove



The Beaches of East Portsmouth are privately owned and use of the beaches is at the discretion of the owners.

For the benefit of all, the owners request:

1. ABSOLUTELY NO barbecues, fires or beach parties
2. ABSOLUTELY NO camping, day or overnight
3. No undue noise or loud music
4. Dogs should be kept under strict control at all times. Dogs on Mill Bay Beach to be on leads between 10am and 5pm May to September
5. All rubbish should be taken away
6. No outboards or road trailers to be left on the beach at any time
7. Night fishing seaward of Mill Bay only
8. No mooring of any boats on the foreshore
9. No driving or parking of any motor vehicles

Mill Bay Boat Parking

Sailing dinghies may be parked on the beach with permission, please refer to beach notices as boat parking is prohibited under the houses. Permits are issued on a weekly basis (with a limit of four weeks per year) and must be CLEARLY displayed on the boats at all times, even when covered. There is a recommended donation of £10 per week per boat, the surplus of which will go to local charities. Boats left on the beach beyond their permit will be removed at the boat owners' expense.

Boat owners may obtain their permits from the Venus Café, at the ferry steps, East Portsmouth - 01548 843558. Please note payment for permits can be CASH only. Those racing in the Merlin Rocket, Yacht Club or Town Regattas may obtain their permit with their regatta application.

North Sands



Sandy beach sheltered from westerly winds, no dry sand on spring tides.

South Sands



Sandy beach with watersports centre.

Soar Mill Cove



Outside the harbour, accessible along scenic coast paths, steep in places, 1h from car park.

Things to do & Events

Events / Sailing Diary 2024

Merlin Rocket Open	27-28 April
Yawl, National 12 & RS400 Open	4-6 May
Salcombe Crab Fest	5 May
Yawl & Solo Open	25-27 May
Kingsbridge Food & Music Festival	31 May - 2 June
Gig Regatta	16 June
Merlin Rocket Week	30 June - 5 July
Kingsbridge Fair Week	20-27 July
Salcombe Town Regatta	3-10 August
Salcombe Yacht Club Regatta	11-16 August
Topper, Laser Open	14-15 Sept
Yawl and Aero Open	28-29 Sept
Salcombe Live	4-6 October
Solo Open	19-20 Oct
SUP The Creek	26-27 October

Adventure Parks

Woodlands Leisure Park, Blackawton, Totnes 01803 712598

Art Galleries

Coves Quay Gallery, 6 Coves Quay, Thorning St, Salcombe TQ8 8DW - 01548 842666

Estuary Gallery Russell Court, Fore St, Salcombe TQ8 8BS - 01548 843948

Kingsbridge Mayne Gallery, 14 Fore St, Kingsbridge TQ7 1NY - 01548 853848

Cinemas

Kings Cinema, Fore St, Kingsbridge TQ7 1PG - 01548 856636

Crab Fishing

Customs House Quay & Victoria Quay, overlooking the lifeboat, Salcombe. Not on the pontoons please.

Ferries - seasonal availability

The Kingsbridge Ferry runs from the Ferry Pier at Salcombe to Kingsbridge from May to September, times vary dependant on the tide.

The East Portlemouth Ferry runs from the Ferry Pier at Salcombe on the hour and half hour when quiet and continuously when busy.

The South Sands Ferry runs from Whitestrand at quarter to and quarter past the hour, it returns from South Sands on the hour and half hour.

Golf

Thurlestone Hotel 9 hole pay and play 01548 560382

Thurlestone Golf Club, visitors welcome with Handicap Certificate - 01548 560405

Dartmouth Golf and Country Club visitors welcome with a Handicap Certificate - 01803 712686

Dinaton Golf Club, Ivybridge - 9 hole pay and play - 01752 892512

Bigbury Golf Club - 01548 810557

Leisure Centres • Swimming • Gym

The Quay Leisure Centre, Kingsbridge, full leisure centre facilities 01548 857100

Salcombe Harbour Hotel, swimming pool and gym 01548 844444

Salcombe Swimming Pool (Seasonal - Open Air)

Museums

The Salcombe Maritime Museum (below TIC)

Cookworthy Museum, Kingsbridge 01548 853235

Overbecks Museum, Sharpitor, Salcombe 01548 842893

Tennis Courts available to hire

North Sands Salcombe - booking at the Winking Prawn, North Sands - 01548 842326

Salcombe Tennis Club - contact John Sprague - 01548 843044

Kingsbridge Recreation ground courts - booking at the Café - 01548 852971



Salcombe Lifeboats

Salcombe has had a Lifeboat Station for 154 years. Operated by a team of local men and women, our mission is to reach any casualty, in any sea/weather conditions. Our 'patch' is from Plymouth to Torbay. The station operates 3 boats, the 25 knot all-weather lifeboat (ALB) The Baltic Exchange III capable of operating in any sea/weather, the 35 knot Atlantic 85 inshore lifeboat (ILB) Gladys Hilda Mustoe for work closer to the shore, and a boarding boat for inshore estuary use. If you want to come and see the boats, just get in touch.

Search & Rescue Incidents

During the first 10 months of 2023 the Salcombe lifeboats have been launched on multiple occasions, to a mixture of incidents involving yachts, fishing boats, commercial vessels, swimmers, and divers. Stand Up Paddle Boards (SUPs) have featured in an increasing number of rescues this year. Nationally, in 2022, RNLI assets have launched on 9,289 occasions, saved 280 lives and aided 16,604 people.

Fundraising

The RNLI is a registered charity and relies on voluntary contributions from the public, it receives no Government funding. The annual cost of running the RNLI station at Salcombe is £280,000. The Fundraising Crew work tirelessly to organize and run

events, with an aim of making Salcombe RNLI station self-sufficient.

Lifeboat Museum & Shop

As part of the lifeboat station in Union Street there is a museum displaying the 154-year history of Salcombe lifeboats, and a retail shop with RNLI branded clothing, cards, and other exciting goods for sale!

One Team

Salcombe RNLI Team is One team and consists of: Operational Seagoing Crew, Operational Shore Crew, Launching Officers, Press Officer, Fundraising Team, and our Shop Team. The entire team is nearly 50 strong. Only one is employed; the remainder are volunteers! If you are interested in joining us, contact Chris Winzar, or Nigel Blazeby.



01548 84 2158



www.salcombelifeboat.co.uk



@salcombernli



@RNLIsalcombe



rnlisalcombe

Coxswain: chris_winzar@rnli.ork.uk

Lifeboat Operations Manager:
nigel_blazeby@rnli.ork.uk

RNLI Salcombe and Kingsbridge Fundraising Events for 2024



17 January	Coffee Morning at Luscombe Maye
24 February	Art Auction at Art Club
04 March	RNLI 200th Birthday
07 March	RNLI Fundraising Recruitment Evening
24 March	Community Sponsored Walk
03 April	RNLI200 Lunch at Thurlestone Hotel
27 April	Marine Jumble in Kingsbridge
05 May	Crabfest pop-up shop
17 May	Lunch at Calancombe
27 July	Sponsored Swim at Thurlestone Hotel
01 August	One Moment, One Crew in Salcombe
25 August	Beach Rugby and BBQ at South Sands
07 September	RNLI at Kingsbridge Show
21 September	Sprint Tri at North Sands
25 October	Thai Curry Night at SYC
07 December	Big Band Night at Malborough





Lifeboats

YOUR LIFE IS PRECIOUS

Always wear your lifejacket

**USELESS
UNLESS
WORN**

Find out more at
RNLI.org/Sailing

The RNLI is the charity that saves lives at sea
Royal National Lifeboat Institution, a charity registered in England
and Wales (209603) and Scotland (SC037736). Registered charity
number 20003326 in the Republic of Ireland

Photo: Shutterstock.com



Welcome to Salcombe Harbour - Kingsbridge Estuary

A rich Local Nature Reserve? ...

... it's our choice!

As an estuary, the Salcombe-Kingsbridge Estuary is unusually rich – with such a small water catchment area and no river, it's conditions are highly dominated by the tidal saltwaters of the coast. This results in some unusually sheltered, fully marine conditions that support a richer diversity of habitats and marine-life communities than most.

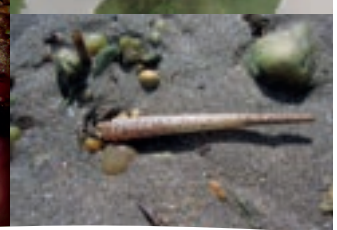
Rich saltmarsh and seagrass jungles, kelp forests, coral and sponge gardens, all are found here and don't be surprised to see grey seals, kingfishers and other coastal characters. Along with the commonly overlooked mudflats, some of these ecosystems supply internationally important services such as carbon sequestration and storage, supporting biodiversity, fishery nurseries and improving water quality!

However, without a river to 'wash' waterborne issues such as nutrients out, these same local conditions mean that these issues can reside in the estuary for longer. These nutrients for example can exacerbate algal blooms that upset and can smother some of the rich local ecology.

However, it is all in our individual powers to join forces and make a collective difference at home, in the garden, street or countryside, on or in the water ... nothing overly radical, just adopt the common sense respect and care outlined over these next few pages! Not just for the estuary but our own health and wellbeing too!

The estuary is designated as a marine Site of Special Scientific Interest and Local Nature Reserve* – where its understanding & conservation, sustainable use & enjoyment are all positively encouraged. A great way to enjoy the estuary and some of its wildlife is to learn more about it – maybe join an event with a local operator. You can find out more from one of our local Information Centres or visit the South Devon National Landscape website for many free self-guided trails, events & guides about this special area.

*A safety-net of byelaws help protect the estuary and its wildlife, to keep it special; dogs should be under close control to minimise disturbance, there are restrictions on open fires and some bait collection activities. The local conservation management of the estuary is overseen by the South Devon NL Estuaries Partnership.



South Devon
National
Landscape



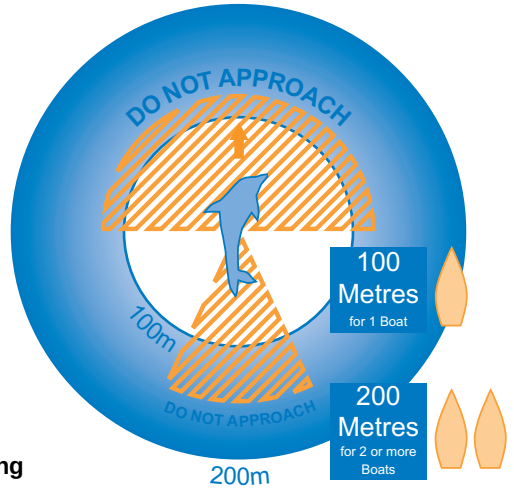
South Devon
Estuaries
Partnership



Marine Animals Code of Conduct

For some animals, the confined shallows of our estuary place greater demands on their ability to navigate and extra allowances must be made for them.

- **Always let them decide what happens**
- **Keep your distance** never closer than **100m** where possible
- **Never drive head-on to, or move between, scatter or separate groups of animals.** If unsure, stop and put the engine in neutral
- **Take special care with mothers and young**
- **Avoid repeated changes in direction or speed - maintain a slow 'no wake' speed -** if animals keep heading away or your activity is distressing them, slowly leave
- **Never** dispose of any rubbish, litter or contaminants at sea.



Don't stay for more than 15 minutes

Reporting offences

Many marine animals are declining and your active co-operation in conserving them is expected by law - most are protected by the Wildlife and Countryside Act (as amended). It is an offence to deliberately or recklessly disturb, harass or endanger them.

Please report any such incidents to the Police or RSPCA stating boat details (type, colour, name etc.) or car registration ... thank you.

Police - 101

RSPCA - 0300 1234999

Salcombe's Seagrass Meadow Jungles!



Make sure that you are aware of where our seagrasses grows (see chart within this guide) and try to avoid these areas - avoid excessive propeller wash, shallow waters navigation, anchoring or allowing your boat to ground or drag over the beds. If you do find yourself within seagrass simply STOP & lift your engine clear, & paddle gently out to deeper water until well clear. Developing seagrass meadows are growing and may not be obvious to you - give all shallows your benefit of doubt! Paddlers too are asked to take extra care over exposed or shallow seagrass communities - avoid harsh paddling or 'punting' within or launching over them.

An information leaflet for our 'common' seagrass is available from the Harbour Office or downloadable from our website:

www.SouthDevon-NL.org.uk

- Some of the UK's richest seagrass meadow communities are found within Salcombe Harbour – they benefit us all
- Our estuary supports two species of seagrass and two meadow types but three forms of plant
- Seagrasses meadows help reduce the effects of global warming 35x more effectively than rainforests
- Seagrass meadows provide vital food and shelter for rich and diverse communities of sea life and are an important nursery habitat for many commercial fishery species
- Seagrasses are true flowering plants, with leaves, roots & seeds - not seaweeds at all
- Globally, seagrass meadows are one of our fastest disappearing marine communities - suffering a wasting disease, thought to be pollution related, the extent of seagrass in the UK is just 10% of that pre 1930's. They may be showing some signs of recovery locally but they are still fragile and need our care ...



South Devon
National
Landscape



South Devon
Estuaries
Partnership

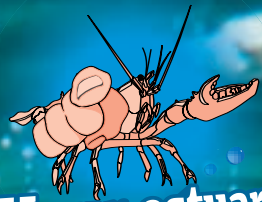


South Hams
District Council

Your Harbour, Your Estuary Needs You!

While you may have a small impact on our planet, remember there are a lot of us!

Here are some simple things that will make a massive difference when we all try.



Your estuary needs you!

Cigarette butts are plastic & toxic to aquatic life - Bin the Butt!

Only ever the 4p's down the Loo - Pee, Poo, Puke & Paper!

Keep wake to a minimum ... on the slow side!

Avoid seagrass meadows - keep to deep water channels only

Only Rain Down road Drains, they drain to local water courses

Be aware of sensitive shore and seabed communities - these are our carbon sinks - cross, paddle, motor and anchor carefully

Anti-foul may be a necessary evil but make sure it's in a tin, on your hull or being disposed of appropriately

Dog parents - dispose of poo appropriately - it can pose a risk to bathers and water quality

Be part of the BioSecurity solution "CHECK - CLEAN - DRY"

Leave nothing but ripples and footprints - take only photos & great memories

Prevent Fat-BerGs - reduce Food, Fats, Oils or Grease down the sink

Paddlers - take extra care when launching over sensitive shores

Litter matters - collect your 5-a-day

Reduce > Refuse > Reuse > Recycle

Be wildlife sensitive - give it space & respect - it may be the law

Every drop counts - refuel & top up oil with care

Fit a holding tank and use local pump-out facilities - if you must pump-out, only pump out on the ebbing tide or out to sea

This is a soft water region - dose detergent for 'soft water'



South Devon
National
Landscape



South Devon
Estuaries
Partnership



Salcombe
EcoPort



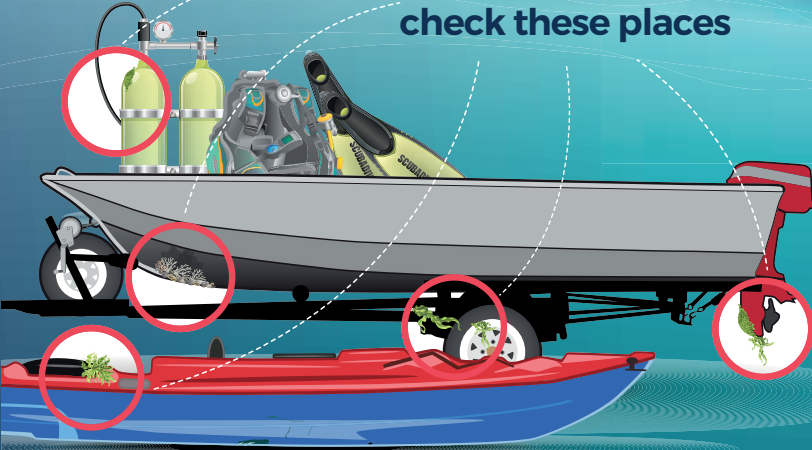
STOP THE SPREAD

Invasive plants and animals can harm the marine environment and wildlife, damage boats, and foul hulls, pontoons, and other hard surfaces. They can be small and hard to spot so are easily spread on damp equipment and clothing.

Protect the marine environment and sport you enjoy by keeping your kit free of invasive plants and animals.



Remember to check these places



Watch out for:



SLIPPER LIMPET



CARPET SEA SQUIRT



WAKAME

CHECK

Check boats, equipment and clothing after leaving the water for fouling or plant material. Remove anything you find and put it in the bin. Reapply anti-fouling annually.

CLEAN

Clean everything thoroughly with freshwater as soon as you can, paying attention to ropes, bilges, trailers, and areas that are damp and hard to access. Wash your anchor and chain before leaving an anchorage.

DRY

Dry - drain water from every part of your trailer and boat, including the bilge, before leaving the site. Dry everything for as long as you can before using elsewhere.





Jellyfish ID Guide

While some jellyfish are harmless or have a very mild sting, others have a painful and even dangerous sting. **MCS would therefore recommend that, for your own safety, you do not touch jellyfish.**



Moon jellyfish
Mild sting.
Up to 40cm in diameter. Transparent, umbrella-shaped bell edged with short hair-like tentacles. Recognised by the four distinct pale purple gonad rings in the bell. Manubrium (mouth and arms, underside and centre of bell) bears 4 short, frilled arms.



Compass jellyfish
This jellyfish stings.
Typically up to 30cm. Colour variable, but usually has pale umbrella-shaped bell with diagnostic brownish V-shaped markings, 32 marginal lobes and 24 long, thin tentacles, four long, thick, frilled arms hang from the manubrium.



Lion's mane jellyfish
This jellyfish stings.
Large, usually 50cm but can reach 2m in diameter. Large reddish brown, umbrella-shaped bell with a mass of long, thin hair-like tentacles as well as short, thick, frilled and folded arms.



Blue jellyfish
Mild sting.
Up to 30cm, similar shape to *C. capillata* but smaller with a blue bell through which radial lines can be seen.



Barrel jellyfish
Mild sting.
Up to 1m in diameter. Robust with a spherical, solid rubbery bell, which can be white or pale pink, blue or yellow and fringed with purple markings. The bell lacks tentacles but eight thick, frilled arms hang from the manubrium.



Mauve stinger
This jellyfish stings.
Up to 10cm. Has a deep bell with pink or mauve warts, 16 marginal lobes and eight marginal, hair-like tentacles. Manubrium bears four longer frilled arms with tiny pink spots.



By-the-wind-sailor
Generally harmless.
Not a jellyfish but a floating, solitary hydranth. Up to 10cm long and blue-purple in colour. Upright sail and chitinous float are diagnostic, with a mass of small tentacles surrounding the mouth on the underside. Occurs in vast swarms.



Portuguese man-of-war
This animal stings.
Not a jellyfish, but a floating colony of hydrozoans. The oval-shaped, transparent float with crest is characteristic. Blue-purple in colour, with many hanging 'fishing polyps' below that may be tens of metres long. Extremely dangerous to humans due to their powerful sting. Rare in the UK but if found in numbers should be reported to the local authorities.

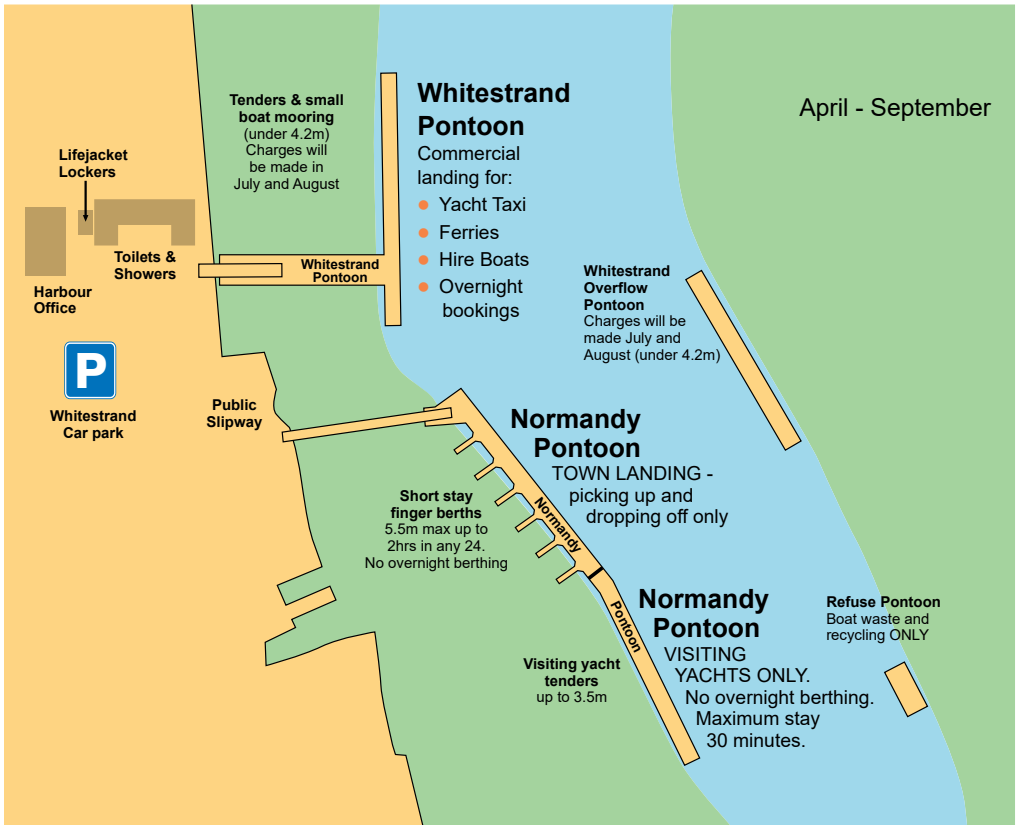
Marine Conservation Society Overross House, Ross Park, Ross-on-Wye, Herefordshire HR9 7US Tel 01989 566017

W www.mcsuk.org f [facebook.com/mcsuk](https://www.facebook.com/mcsuk) t twitter.com/mcsuk

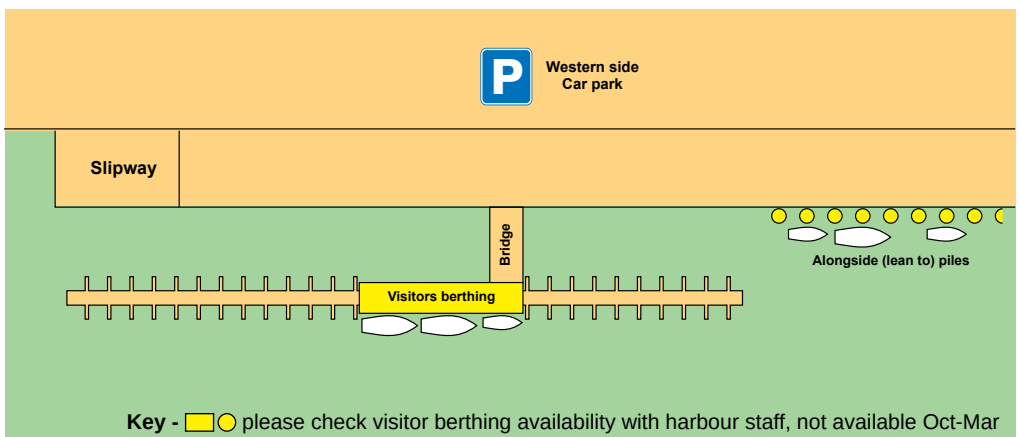
Please report any sightings www.mcsuk.org/sightings

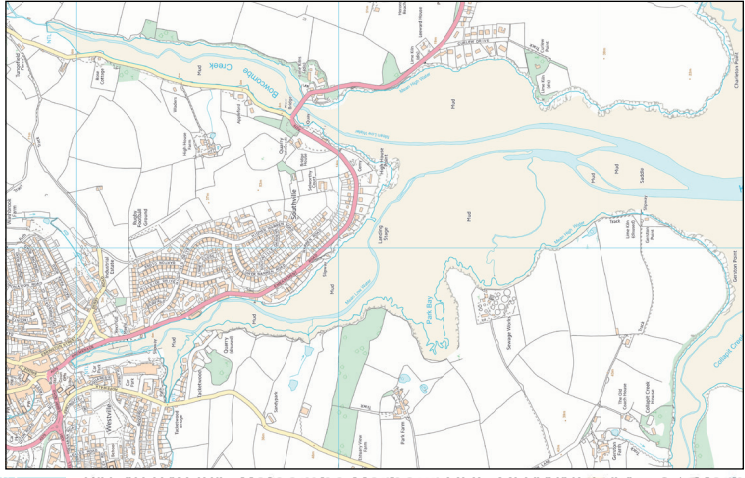
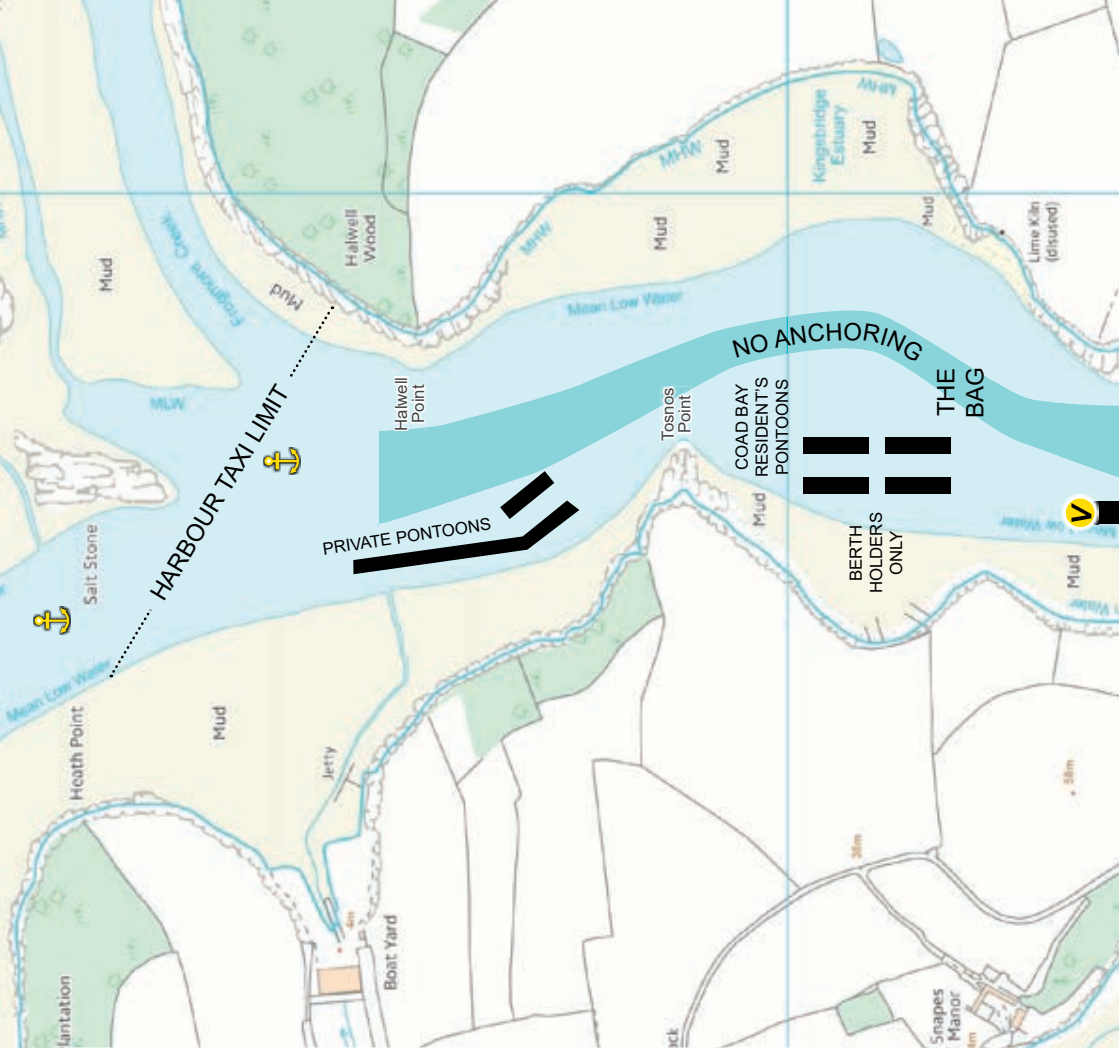
Protecting our seas, shores and wildlife

Salcombe Town Landings



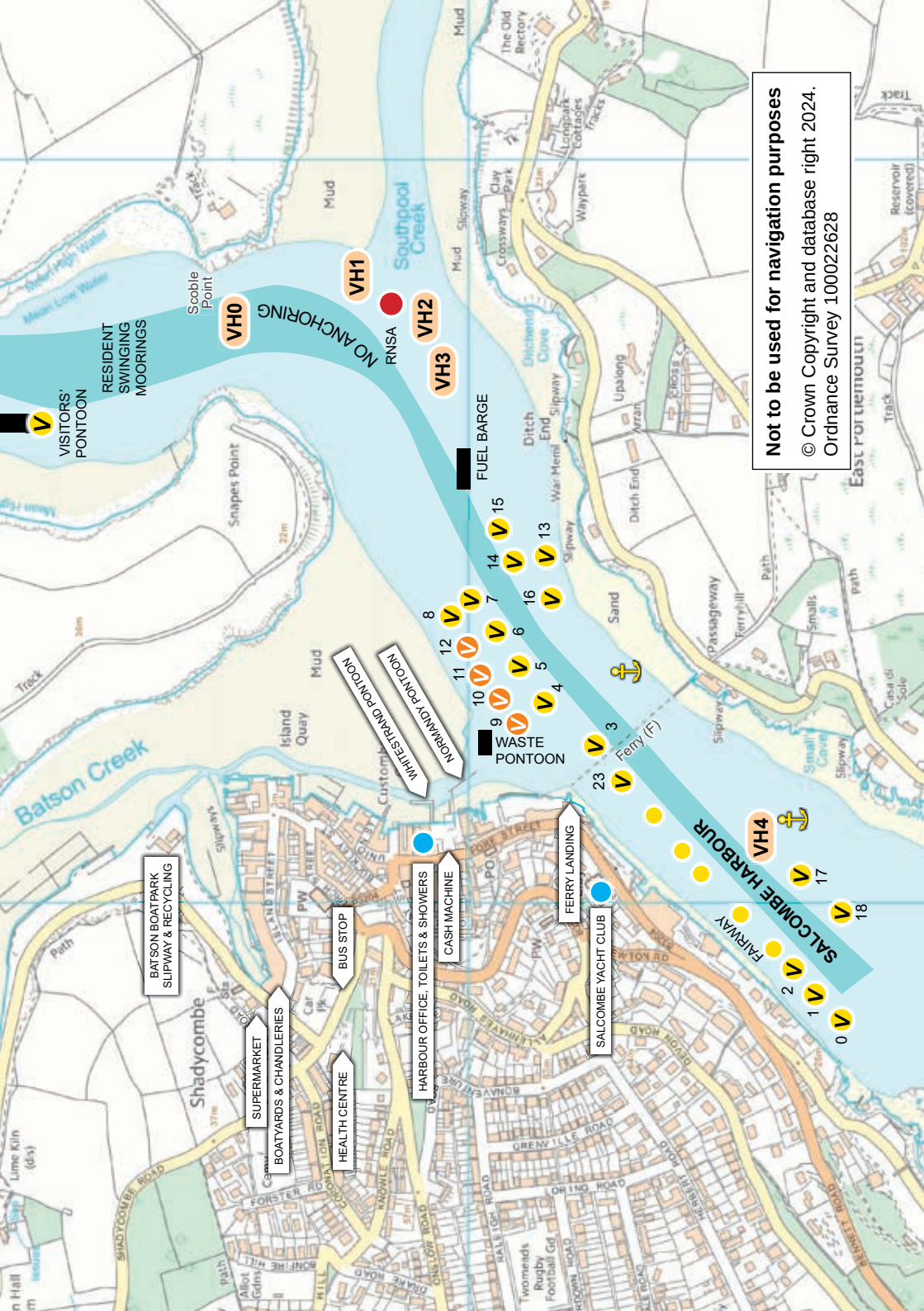
Kingsbridge Town Landings





Salcombe Harbour mooring & pontoon locations





Not to be used for navigation purposes
 © Crown Copyright and database right 2024.
 Ordnance Survey 100022628

V
 VISITORS' PONTOON

RESIDENT SWINGING MOORINGS

VH0

NO ANCHORING

VH1

RNSA

VH2

VH3

FUEL BARGE

WASTE PONTOON

FERRY LANDING

SALCOMBE HARBOUR

BATSON BOATPARK SLIPWAY & RECYCLING

SUPERMARKET

BOATYARDS & CHANDLERIES

HEALTH CENTRE

HARBOUR OFFICE, TOILETS & SHOWERS

CASH MACHINE

SALCOMBE YACHT CLUB

SHADYCOMBE

ISLAND QUAY

WATERSTAND PONTOON

NORMANDY PONTOON

BATSON CREEK

SOUTHPOOL CREEK

VH4

17

18

1

2

0

1

2

3

4

5

6

7

8

9

10

11

12

13

14

15

16

17

18

19

20

21

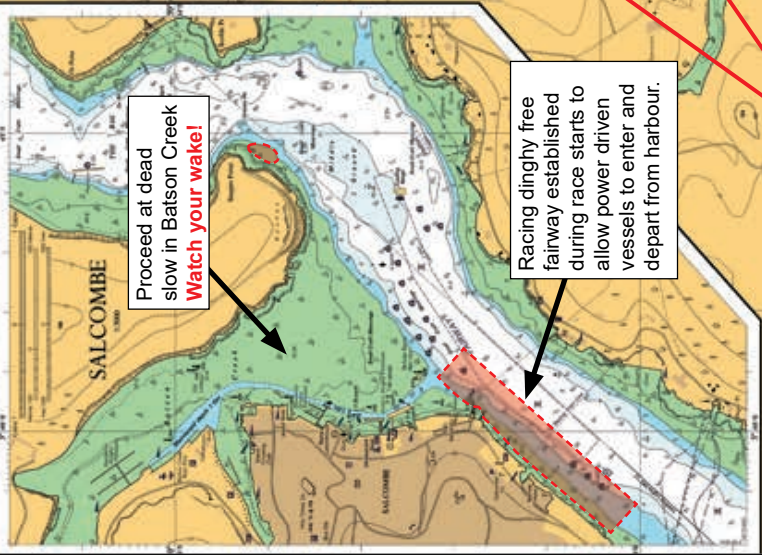
22

23



Salcombe Harbour & Kingsbridge Estuary

The estuary is a marine Site of Special Scientific Interest and Local Nature Reserve. Please join us in caring for this special area - byelaws apply. There is a 5 metre tidal range within the estuary. The areas coloured green on the chart dry out at low water. Beware of strong tidal streams, if you ground, stay with your boat and call the Harbour office.



Proceed at dead slow in Batson Creek
Watch your wake!

Racing dinghy free fairway established during race starts to allow power driven vessels to enter and depart from harbour.

6 Knots

Beware of mud on falling tides - harbour dries at low water.

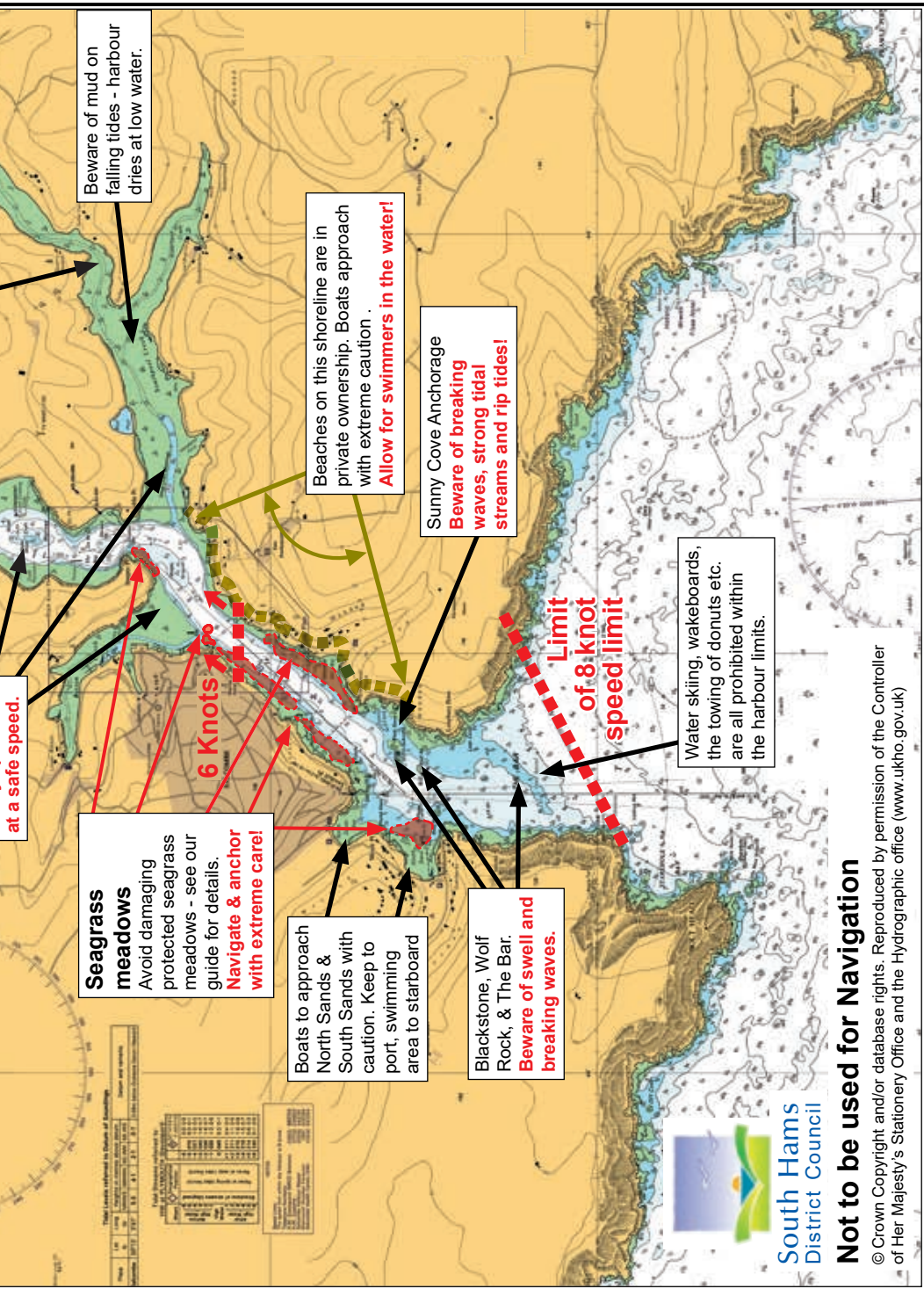
Quiet areas - good bird watching but **Watch your wake.**

8 Knots
6 Knots

Watch your wake through moorings, **Always proceed**

Seagrass meadows
Avoid damaging protected seagrass meadows - see our guide for details.
Navigate & anchor with extreme care!

Saltstone
No Landing - Habitat vulnerable to trampling.



Beware of mud on falling tides - harbour dries at low water.

Beaches on this shoreline are in private ownership. Boats approach with extreme caution. **Allow for swimmers in the water!**

Sunny Cove Anchorage **Beware of breaking waves, strong tidal streams and rip tides!**

Water skiing, wakeboards, the towing of donuts etc. are all prohibited within the harbour limits.

Limit of 8 knot speed limit

6 Knots

Seagrass meadows
Avoid damaging protected seagrass meadows - see our guide for details. **Navigate & anchor with extreme care!**

Boats to approach North Sands & South Sands with caution. Keep to port, swimming area to starboard

Blackstone, Wolf Rock, & The Bar. **Beware of swell and breaking waves.**

at a safe speed.



South Hams District Council

Not to be used for Navigation

© Crown Copyright and/or database rights. Reproduced by permission of the Controller of Her Majesty's Stationery Office and the Hydrographic office (www.ukho.gov.uk)



National Coastwatch

NCI Prawle Point

We look out for your safety by maintaining a daytime watch 365 days a year over the sea and coast path.



Call "Prawle Point NCI" on Channel 65 for a radio or AIS check, and local weather conditions or call us on 01548 511259.

The current weather is broadcast on VHF Channel 65 at approximately 09:45, 11:45, 13:45, 15:45 (and 17:45 in the summer).


National Coastwatch (registered charity no. 1159975) receives no Government funding and is wholly manned by volunteers.

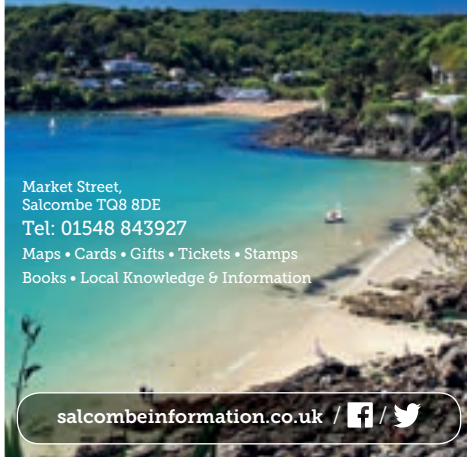
Visitors are welcome to visit our Lookout and Visitor Centre

Visit www.nci-prawlepoint.org.uk for more information, live weather and webcams.



Please donate by scanning the QR code, to help us continue our safety watch.




Experience
Salcombe
at Salcombe Information Centre



Market Street,
Salcombe TQ8 8DE
Tel: 01548 843927
Maps • Cards • Gifts • Tickets • Stamps
Books • Local Knowledge & Information

salcombeinformation.co.uk /  / 

**KINGSBRIDGE SALCOMBE
FERRY**





Scheduled ferry service Occasional bar and light
Cruises: harbour/ creeks / coastal refreshments on board
Special events and exclusive charter enquiries are also very welcome

Timetables and info available from website, Facebook, local tourist info centres and departure point notice boards

www.kingsbridgesalcombeferry.com

Salcombe tide-tables

January 2024

Time Zone UT (GMT)

Date	HEIGHTS ABOVE CHART DATUM							
	High Water				Low Water			
	Morning		Afternoon		Morning		Afternoon	
	Time	m	Time	m	Time	m	Time	m
1 M	08 54	4.6	21 16	4.2	02 42	1.5	15 02	1.6
2 TU	09 28	4.5	21 52	4.2	03 14	1.7	15 35	1.7
3 W	10 06	4.4	22 36	4.1	03 50	1.8	16 13	1.8
4 TH	10 51	4.3	23 28	4.0	04 31	2.0	16 59	1.9
5 F	11 44	4.2			05 23	2.1	17 57	2.0
6 SA	00 30	4.0	12 48	4.1	06 31	2.2	19 12	2.0
7 SU	01 45	4.0	14 04	4.2	07 53	2.2	20 32	1.9
8 M	02 59	4.2	15 21	4.3	09 12	2.0	21 41	1.7
9 TU	04 03	4.4	16 27	4.5	10 14	1.7	22 38	1.5
10 W	04 58	4.7	17 24	4.7	11 07	1.4	23 28	1.3
11 TH	05 47	4.9	18 15	4.9	11 55	1.1		
12 F	06 32	5.1	19 01	5.0	00 14	1.1	12 40	0.9
13 SA	07 15	5.2	19 44	5.0	00 58	0.9	13 25	0.8
14 SU	07 57	5.3	20 26	5.0	01 41	0.9	14 08	0.8
15 M	08 40	5.3	21 08	4.9	02 24	0.9	14 51	0.9
16 TU	09 23	5.1	21 52	4.7	03 07	1.0	15 36	1.0
17 W	10 09	5.0	22 39	4.6	03 51	1.2	16 22	1.3
18 TH	10 59	4.7	23 31	4.4	04 39	1.4	17 14	1.5
19 F	11 55	4.5			05 35	1.7	18 16	1.7
20 SA	00 30	4.3	13 00	4.3	06 45	1.9	19 31	1.9
21 SU	01 40	4.2	14 14	4.2	08 07	1.9	20 46	1.8
22 M	02 53	4.3	15 29	4.2	09 20	1.8	21 48	1.7
23 TU	04 01	4.4	16 36	4.4	10 19	1.7	22 40	1.5
24 W	05 00	4.6	17 30	4.5	11 09	1.5	23 26	1.3
25 TH	05 48	4.8	18 15	4.8	11 53	1.3		
26 F	06 28	4.9	18 53	4.7	00 07	1.2	12 32	1.2
27 SA	07 04	5.0	19 26	4.7	00 45	1.1	13 07	1.2
28 SU	07 35	5.0	19 56	4.7	01 19	1.1	13 39	1.2
29 M	08 04	4.9	20 23	4.6	01 51	1.2	14 08	1.2
30 TU	08 30	4.8	20 49	4.5	02 20	1.3	14 37	1.3
31 W	08 58	4.7	21 18	4.4	02 49	1.4	15 05	1.4

February 2024

Time Zone UT (GMT)

Date	HEIGHTS ABOVE CHART DATUM							
	High Water				Low Water			
	Morning		Afternoon		Morning		Afternoon	
	Time	m	Time	m	Time	m	Time	m
1 TH	09 28	4.6	21 51	4.3	03 18	1.5	15 37	1.5
2 F	10 04	4.5	22 31	4.2	03 51	1.7	16 14	1.6
3 SA	10 49	4.3	23 22	4.1	04 32	1.9	17 00	1.8
4 SU	11 46	4.1			05 26	2.1	18 05	2.0
5 M	00 29	4.0	13 04	4.0	06 48	2.3	19 38	2.1
6 TU	02 01	4.0	14 48	4.1	08 31	2.2	21 11	2.0
7 W	03 32	4.3	16 14	4.3	09 51	1.9	22 19	1.7
8 TH	04 41	4.6	17 17	4.7	10 51	1.4	23 13	1.3
9 F	05 35	5.0	18 08	5.0	11 41	1.0		
10 SA	06 22	5.3	18 52	5.2	00 00	1.0	12 26	0.7
11 SU	07 04	5.5	19 32	5.3	00 44	0.7	13 10	0.5
12 M	07 44	5.6	20 09	5.3	01 27	0.6	13 52	0.5
13 TU	08 24	5.5	20 47	5.1	02 08	0.6	14 33	0.6
14 W	09 03	5.3	21 25	5.0	02 49	0.8	15 14	0.8
15 TH	09 43	5.1	22 06	4.7	03 29	1.0	15 55	1.2
16 F	10 26	4.7	22 50	4.4	04 11	1.3	16 39	1.5
17 SA	11 15	4.4	23 44	4.2	04 58	1.7	17 31	1.8
18 SU			12 17	4.1	05 59	2.0	18 43	2.1
19 M	00 55	4.0	13 42	3.9	07 30	2.2	20 15	2.2
20 TU	02 24	4.0	15 14	3.9	09 01	2.1	21 29	2.0
21 W	03 45	4.2	16 28	4.1	10 05	1.9	22 24	1.7
22 TH	04 46	4.5	17 20	4.4	10 54	1.6	23 10	1.4
23 F	05 32	4.8	18 01	4.6	11 36	1.4	23 50	1.2
24 SA	06 10	4.9	18 35	4.8			12 12	1.2
25 SU	06 43	5.1	19 06	4.9	00 25	1.1	12 45	1.1
26 M	07 12	5.1	19 33	4.9	00 58	1.0	13 14	1.0
27 TU	07 38	5.0	19 57	4.8	01 27	1.1	13 42	1.0
28 W	08 02	5.0	20 20	4.7	01 55	1.1	14 09	1.1
29 TH	08 27	4.9	20 44	4.7	02 22	1.2	14 36	1.2

March 2024

Time Zone UT (GMT)

Date	HEIGHTS ABOVE CHART DATUM							
	High Water				Low Water			
	Morning		Afternoon		Morning		Afternoon	
	Time	m	Time	m	Time	m	Time	m
1 F	08 54	4.7	21 13	4.5	02 49	1.4	15 05	1.3
2 SA	09 26	4.6	21 48	4.4	03 19	1.5	15 38	1.5
3 SU	10 07	4.4	22 35	4.2	03 56	1.7	16 20	1.7
4 M	11 04	4.1	23 41	4.0	04 45	2.0	17 19	2.1
5 TU			12 28	3.9	06 02	2.2	18 55	2.3
6 W	01 18	4.0	14 28	4.0	07 59	2.2	20 45	2.1
7 TH	03 06	4.2	16 00	4.3	09 30	1.8	21 59	1.7
8 F	04 20	4.7	17 01	4.7	10 32	1.3	22 54	1.3
9 SA	05 16	5.1	17 49	5.1	11 22	0.9	23 41	0.8
10 SU	06 02	5.4	18 30	5.3			12 07	0.6
11 M	06 44	5.6	19 09	5.4	00 25	0.5	12 50	0.4
12 TU	07 23	5.7	19 45	5.4	01 07	0.4	13 31	0.4
13 W	08 01	5.6	20 21	5.3	01 47	0.5	14 11	0.5
14 TH	08 39	5.3	20 57	5.0	02 27	0.6	14 49	0.8
15 F	09 16	5.0	21 34	4.8	03 05	0.9	15 27	1.2
16 SA	09 55	4.6	22 15	4.4	03 44	1.3	16 06	1.6
17 SU	10 40	4.2	23 05	4.2	04 26	1.7	16 51	1.9
18 M	11 40	3.9			05 21	2.1	17 56	2.3
19 TU	00 18	3.9	13 16	3.7	06 50	2.4	19 41	2.4
20 W	01 55	3.9	14 55	3.8	08 41	2.3	21 07	2.2
21 TH	03 18	4.1	16 05	4.1	09 46	2.0	22 03	1.8
22 F	04 18	4.4	16 54	4.4	10 32	1.7	22 47	1.5
23 SA	05 03	4.7	17 33	4.7	11 14	1.4	23 25	1.3
24 SU	05 40	4.9	18 07	4.9	11 45	1.2		
25 M	06 13	5.0	18 38	5.0	00 00	1.1	12 17	1.0
26 TU	06 43	5.1	19 05	5.0	00 31	1.0	12 46	0.9
27 W	07 09	5.1	19 28	4.9	01 01	1.0	13 15	0.9
28 TH	07 34	5.0	19 51	4.9	01 30	1.1	13 43	1.0
29 F	07 59	4.9	20 15	4.8	01 58	1.2	14 10	1.1
30 SA	08 27	4.7	20 44	4.6	02 25	1.3	14 39	1.3
31 SU	09 00	4.5	21 19	4.5	02 56	1.4	15 13	1.5

April 2024

Time Zone UT (GMT)

Date	HEIGHTS ABOVE CHART DATUM							
	High Water				Low Water			
	Morning		Afternoon		Morning		Afternoon	
	Time	m	Time	m	Time	m	Time	m
1 M	09 43	4.3	22 08	4.3	03 35	1.6	15 56	1.8
2 TU	10 46	4.0	23 20	4.1	04 26	1.9	16 57	2.1
3 W			12 18	3.9	05 45	2.1	18 32	2.3
4 TH	00 56	4.1	14 11	4.0	07 36	2.1	20 19	2.1
5 F	02 38	4.3	15 34	4.4	09 06	1.7	21 34	1.7
6 SA	03 51	4.7	16 33	4.8	10 07	1.2	22 29	1.2
7 SU	04 47	5.1	17 20	5.1	10 58	0.8	23 18	0.8
8 M	05 35	5.4	18 02	5.4	11 44	0.5		
9 TU	06 18	5.6	18 41	5.5	00 02	0.5	12 26	0.4
10 W	06 58	5.6	19 18	5.4	00 45	0.4	13 07	0.4
11 TH	07 37	5.4	19 55	5.3	01 25	0.5	13 46	0.6
12 F	08 14	5.1	20 31	5.0	02 05	0.7	14 24	0.9
13 SA	08 52	4.7	21 08	4.7	02 43	1.1	15 01	1.3
14 SU	09 30	4.4	21 49	4.4	03 21	1.4	15 39	1.6
15 M	10 14	4.0	22 39	4.2	04 02	1.8	16 21	2.0
16 TU	11 16	3.8	23 48	4.0	04 52	2.2	17 19	2.3
17 W			12 50	3.6	06 08	2.4	18 50	2.4
18 TH	01 17	3.9	14 18	3.8	08 02	2.3	20 30	2.3
19 F	02 34	4.1	15 23	4.1	09 12	2.1	21 30	2.0
20 SA	03 33	4.3	16 13	4.4	09 58	1.7	22 15	1.7
21 SU	04 21	4.6	16 55	4.6	10 36	1.4	22 53	1.4
22 M	05 02	4.8	17 32	4.9	11 11	1.2	23 29	1.3
23 TU	05 38	4.9	18 05	5.0	11 44	1.0		
24 W	06 11	5.0	18 34	5.0	00 02	1.2	12 16	1.0
25 TH	06 41	5.0	19 01	4.9	00 35	1.1	12 48	1.0
26 F	07 09	4.9	19 27	4.9	01 06	1.2	13 19	1.1
27 SA	07 39	4.8	19 55	4.8	01 38	1.2	13 51	1.2
28 SU	08 12	4.6	20 29	4.7	02 10	1.3	14 24	1.4
29 M	08 52	4.4	21 10	4.5	02 45	1.4	15 01	1.6
30 TU	09 42	4.2	22 05	4.4	03 28	1.6	15 48	1.8

For BST (British Summer Time) add 1 hour, Sun 31st March – Sat 28th October 2024



May 2024

Time Zone UT (GMT)

Date	HEIGHTS ABOVE CHART DATUM							
	High Water				Low Water			
	Morning		Afternoon		Morning		Afternoon	
	Time	m	Time	m	Time	m	Time	m
1 W	10 49	4.1	23 16	4.3	04 24	1.8	16 51	2.0
2 TH			12 14	4.0	05 40	1.9	18 16	2.1
3 F	00 40	4.3	13 44	4.2	07 13	1.9	19 49	2.0
4 SA	02 06	4.5	14 58	4.5	08 36	1.6	21 03	1.6
5 SU	03 16	4.8	15 57	4.8	09 38	1.2	22 02	1.2
6 M	04 14	5.1	16 47	5.1	10 31	0.9	22 52	0.9
7 TU	05 05	5.3	17 32	5.3	11 18	0.7	23 39	0.7
8 W	05 51	5.3	18 14	5.3			12 02	0.6
9 TH	06 35	5.3	18 54	5.3	00 22	0.6	12 44	0.7
10 F	07 15	5.1	19 33	5.1	01 05	0.7	13 24	0.8
11 SA	07 55	4.8	20 11	4.9	01 46	0.9	14 03	1.1
12 SU	08 34	4.5	20 50	4.7	02 25	1.2	14 40	1.4
13 M	09 14	4.2	21 32	4.4	03 03	1.5	15 18	1.7
14 TU	09 59	4.0	22 19	4.2	03 43	1.8	15 59	1.9
15 W	10 56	3.8	23 18	4.1	04 28	2.1	16 49	2.2
16 TH			12 10	3.8	05 26	2.2	17 55	2.3
17 F	00 28	4.0	13 25	3.8	06 44	2.2	19 20	2.3
18 SA	01 38	4.1	14 29	4.0	08 07	2.1	20 36	2.1
19 SU	02 39	4.3	15 23	4.3	09 06	1.8	21 30	1.9
20 M	03 31	4.5	16 11	4.5	09 52	1.6	22 14	1.7
21 TU	04 18	4.6	16 53	4.7	10 32	1.4	22 55	1.5
22 W	05 01	4.7	17 31	4.8	11 11	1.2	23 33	1.3
23 TH	05 40	4.8	18 06	4.9	11 49	1.1		
24 F	06 17	4.8	18 38	4.9	00 10	1.3	12 25	1.1
25 SA	06 53	4.8	19 11	4.9	00 47	1.2	13 02	1.2
26 SU	07 30	4.7	19 47	4.8	01 24	1.2	13 39	1.3
27 M	08 11	4.5	20 27	4.7	02 03	1.3	14 18	1.4
28 TU	08 56	4.4	21 13	4.7	02 44	1.4	14 59	1.5
29 W	09 48	4.3	22 07	4.6	03 30	1.5	15 48	1.7
30 TH	10 49	4.2	23 09	4.5	04 24	1.6	16 46	1.8
31 F	11 57	4.2			05 29	1.7	17 56	1.9

For BST (British Summer Time) add 1 hour, Sun 31st March – Sat 26th October 2024

June 2024

Time Zone UT (GMT)

Date	HEIGHTS ABOVE CHART DATUM							
	High Water				Low Water			
	Morning		Afternoon		Morning		Afternoon	
	Time	m	Time	m	Time	m	Time	m
1 SA	00 18	4.5	13 09	4.3	06 45	1.7	19 15	1.8
2 SU	01 31	4.6	14 17	4.5	08 01	1.6	20 30	1.6
3 M	02 39	4.7	15 19	4.7	09 07	1.3	21 33	1.4
4 TU	03 41	4.9	16 14	4.9	10 03	1.1	22 27	1.1
5 W	04 37	5.0	17 05	5.0	10 53	1.0	23 17	1.0
6 TH	05 29	5.0	17 52	5.1	11 40	0.9		
7 F	06 17	4.9	18 36	5.1	00 03	0.9	12 23	0.9
8 SA	07 01	4.8	19 18	5.0	00 48	1.0	13 05	1.0
9 SU	07 42	4.6	19 58	4.9	01 29	1.1	13 45	1.2
10 M	08 22	4.4	20 36	4.7	02 09	1.3	14 22	1.4
11 TU	09 01	4.2	21 15	4.6	02 47	1.5	14 59	1.6
12 W	09 42	4.1	21 56	4.4	03 23	1.7	15 36	1.8
13 TH	10 27	4.0	22 41	4.3	04 01	1.9	16 17	1.9
14 F	11 19	3.9	23 32	4.2	04 45	2.0	17 05	2.1
15 SA			12 19	4.0	05 37	2.0	18 04	2.2
16 SU	00 29	4.2	13 23	4.0	06 40	2.0	19 15	2.2
17 M	01 32	4.2	14 25	4.2	07 51	1.9	20 27	2.1
18 TU	02 34	4.3	15 21	4.3	08 56	1.8	21 28	1.9
19 W	03 33	4.4	16 13	4.5	09 51	1.6	22 20	1.7
20 TH	04 26	4.5	17 00	4.7	10 40	1.4	23 07	1.5
21 F	05 16	4.6	17 43	4.8	11 25	1.3	23 51	1.4
22 SA	06 03	4.7	18 23	4.9	12 08	1.2	12 08	1.2
23 SU	06 47	4.7	19 03	4.9	00 33	1.2	12 49	1.2
24 M	07 29	4.7	19 43	5.0	01 15	1.1	13 31	1.2
25 TU	08 12	4.7	20 25	5.0	01 57	1.1	14 12	1.2
26 W	08 56	4.6	21 10	4.9	02 40	1.1	14 55	1.3
27 TH	09 43	4.5	21 59	4.8	03 25	1.2	15 41	1.4
28 F	10 34	4.5	22 52	4.8	04 13	1.3	16 31	1.5
29 SA	11 29	4.4	23 51	4.7	05 08	1.5	17 30	1.7
30 SU			12 31	4.4	06 12	1.6	18 39	1.7

For BST (British Summer Time) add 1 hour, Sun 31st March – Sat 26th October 2024

July 2024

Time Zone UT (GMT)

Date	HEIGHTS ABOVE CHART DATUM							
	High Water				Low Water			
	Morning		Afternoon		Morning		Afternoon	
	Time	m	Time	m	Time	m	Time	m
1 M	00 55	4.6	13 36	4.4	07 24	1.6	19 55	1.7
2 TU	02 04	4.5	14 43	4.5	08 36	1.6	21 06	1.6
3 W	03 13	4.5	15 47	4.6	09 38	1.4	22 07	1.4
4 TH	04 18	4.6	16 48	4.8	10 33	1.3	23 00	1.3
5 F	05 16	4.7	17 38	4.9	11 22	1.2	23 49	1.2
6 SA	06 08	4.7	18 25	5.0			12 07	1.1
7 SU	06 53	4.7	19 07	5.0	00 33	1.2	12 48	1.1
8 M	07 33	4.6	19 45	4.9	01 14	1.2	13 27	1.2
9 TU	08 03	4.5	20 19	4.8	01 51	1.3	14 03	1.3
10 W	08 42	4.4	20 52	4.7	02 25	1.4	14 37	1.4
11 TH	09 15	4.3	21 24	4.6	02 57	1.5	15 09	1.6
12 F	09 48	4.2	21 59	4.5	03 29	1.6	15 43	1.7
13 SA	10 26	4.2	22 38	4.4	04 04	1.7	16 20	1.9
14 SU	11 10	4.1	23 24	4.3	04 44	1.8	17 05	2.0
15 M			12 04	4.1	05 34	1.9	18 02	2.2
16 TU	00 20	4.2	13 10	4.0	06 30	2.0	19 16	2.2
17 W	01 29	4.1	14 24	4.1	07 55	2.0	20 38	2.2
18 TH	02 48	4.2	15 34	4.3	09 11	1.9	21 48	1.9
19 F	04 00	4.3	16 34	4.5	10 13	1.7	22 45	1.6
20 SA	05 02	4.5	17 26	4.8	11 05	1.5	23 34	1.3
21 SU	05 54	4.7	18 12	5.0	11 53	1.2		
22 M	06 41	4.8	18 54	5.1	00 19	1.1	12 36	1.1
23 TU	07 23	4.9	19 35	5.2	01 02	0.9	13 19	1.0
24 W	08 03	5.0	20 15	5.3	01 45	0.8	14 01	0.9
25 TH	08 43	4.9	20 57	5.2	02 27	0.8	14 42	1.0
26 F	09 24	4.8	21 41	5.1	03 09	0.9	15 25	1.1
27 SA	10 08	4.7	22 27	4.9	03 53	1.1	16 10	1.3
28 SU	10 56	4.5	23 20	4.6	04 41	1.4	17 00	1.5
29 M	11 52	4.4			05 37	1.6	18 03	1.8
30 TU	00 21	4.4	12 58	4.2	06 47	1.8	19 22	1.9
31 W	01 35	4.2	14 14	4.2	08 07	1.9	20 45	1.9

For BST (British Summer Time) add 1 hour, Sun 31st March – Sat 26th October 2024

August 2024

Time Zone UT (GMT)

Date	HEIGHTS ABOVE CHART DATUM							
	High Water				Low Water			
	Morning		Afternoon		Morning		Afternoon	
	Time	m	Time	m	Time	m	Time	m
1 TH	02 56	4.2	15 30	4.4	09 19	1.8	21 53	1.7
2 F	04 11	4.3	16 36	4.6	10 17	1.6	22 48	1.5
3 SA	05 13	4.5	17 30	4.8	11 07	1.4	23 35	1.3
4 SU	06 01	4.6	18 14	4.9	11 51	1.2		
5 M	06 41	4.7	18 51	5.0	00 16	1.2	12 31	1.1
6 TU	07 15	4.7	19 24	5.0	00 54	1.1	13 07	1.1
7 W	07 46	4.7	19 54	5.0	01 28	1.1	13 40	1.1
8 TH	08 14	4.7	20 21	4.9	01 58	1.2	14 10	1.2
9 F	08 40	4.6	20 48	4.8	02 27	1.3	14 39	1.4
10 SA	09 07	4.5	21 16	4.6	02 55	1.3	15 08	1.5
11 SU	09 38	4.4	21 50	4.5	03 24	1.4	15 39	1.7
12 M	10 15	4.3	22 30	4.3	03 58	1.6	16 15	1.9
13 TU	11 01	4.1	23 23	4.1	04 40	1.8	17 03	2.1
14 W			12 02	4.0	05 36	2.0	18 12	2.3
15 TH	00 33	4.0	13 25	4.0	06 59	2.2	19 51	2.3
16 F	02 13	4.0	15 00	4.2	08 36	2.1	21 22	2.0
17 SA	03 44	4.2	16 12	4.5	09 51	1.8	22 25	1.6
18 SU	04 50	4.5	17 08	4.8	10 47	1.5	23 16	1.2
19 M	05 41	4.8	17 55	5.1	11 35	1.1		
20 TU	06 26	5.1	18 37	5.4	00 01	0.9	12 19	0.9
21 W	07 05	5.2	19 17	5.5	00 45	0.6	13 02	0.7
22 TH	07 43	5.2	19 56	5.5	01 26	0.5	13 43	0.6
23 F	08 20	5.2	20 36	5.4	02 07	0.6	14 23	0.7
24 SA	08 58	5.0	21 17	5.1	02 48	0.8	15 03	0.9
25 SU	09 38	4.8	22 00	4.8	03 29	1.1	15 45	1.2
26 M	10 23	4.5	22 49	4.5	04 12	1.4	16 32	1.5
27 TU	11 16	4.3	23 50	4.1	05 03	1.8	17 30	1.9
28 W			12 26	4.1	06 10	2.1	18 54	2.2
29 TH	01 15	3.9	13 55	4.0	07 42	2.2	20 32	2.1
30 F	02 51	3.9	15 20	4.2	09 03	2.0	21 42	1.9
31 SA	04 08	4.1	16 25	4.5	10 03	1.7	22 34	1.6

For BST (British Summer Time) add 1 hour, Sun 31st March – Sat 26th October 2024

September 2024

Time Zone UT (GMT)

Date	HEIGHTS ABOVE CHART DATUM							
	High Water				Low Water			
	Morning		Afternoon		Morning		Afternoon	
Time	m	Time	m	Time	m	Time	m	
1 SU	05 02	4.4	17 13	4.8	10 50	1.4	23 17	1.3
2 M	05 43	4.6	17 52	5.0	11 32	1.2	23 55	1.1
3 TU	06 18	4.8	18 25	5.1			12 09	1.0
4 W	06 49	4.9	18 56	5.1	00 29	1.0	12 43	1.0
5 TH	07 17	4.9	19 23	5.1	01 00	1.0	13 13	1.0
6 F	07 42	4.9	19 48	5.0	01 28	1.0	13 42	1.1
7 SA	08 05	4.8	20 12	4.8	01 55	1.1	14 09	1.2
8 SU	08 29	4.7	20 38	4.7	02 22	1.2	14 35	1.4
9 M	08 56	4.5	21 08	4.5	02 49	1.3	15 03	1.5
10 TU	09 29	4.4	21 46	4.3	03 20	1.5	15 37	1.7
11 W	10 13	4.2	22 39	4.1	03 58	1.8	16 22	2.0
12 TH	11 15	4.0	23 58	3.9	04 51	2.0	17 29	2.2
13 F			12 43	4.0	06 14	2.3	19 15	2.3
14 SA	01 53	3.9	14 30	4.1	08 06	2.2	20 57	2.0
15 SU	03 28	4.2	15 48	4.5	09 28	1.9	22 03	1.5
16 M	04 30	4.6	16 44	4.9	10 26	1.4	22 54	1.0
17 TU	05 18	5.0	17 31	5.3	11 14	1.0	23 40	0.7
18 W	06 00	5.3	18 13	5.5	11 59	0.7		
19 TH	06 39	5.4	18 54	5.6	00 23	0.4	12 40	0.5
20 F	07 17	5.4	19 33	5.6	01 04	0.4	13 22	0.5
21 SA	07 54	5.3	20 12	5.3	01 45	0.5	14 02	0.6
22 SU	08 31	5.1	20 52	5.0	02 24	0.8	14 42	0.9
23 M	09 10	4.8	21 34	4.6	03 04	1.1	15 22	1.2
24 TU	09 54	4.5	22 22	4.2	03 45	1.5	16 07	1.6
25 W	10 46	4.2	23 26	3.9	04 32	1.9	17 03	2.0
26 TH			12 00	4.0	05 37	2.2	18 29	2.3
27 F	01 04	3.7	13 36	4.0	07 16	2.3	20 18	2.2
28 SA	02 41	3.8	14 59	4.2	08 45	2.1	21 25	2.0
29 SU	03 48	4.1	15 58	4.4	09 43	1.8	22 13	1.6
30 M	04 35	4.4	16 42	4.7	10 28	1.5	22 52	1.3

For BST (British Summer Time) add 1 hour, Sun 31st March - Sat 26th October 2024

October 2024

Time Zone UT (GMT)

Date	HEIGHTS ABOVE CHART DATUM							
	High Water				Low Water			
	Morning		Afternoon		Morning		Afternoon	
Time	m	Time	m	Time	m	Time	m	
1 TU	05 13	4.7	17 20	4.9	11 07	1.2	23 28	1.1
2 W	05 46	4.9	17 53	5.1	11 43	1.1		
3 TH	06 17	5.0	18 24	5.1	00 00	1.0	12 15	1.0
4 F	06 46	5.0	18 52	5.1	00 29	0.9	12 45	1.0
5 SA	07 11	5.0	19 16	5.0	00 58	0.9	13 14	1.1
6 SU	07 34	4.9	19 41	4.8	01 26	1.0	13 42	1.2
7 M	07 57	4.8	20 07	4.7	01 53	1.1	14 09	1.3
8 TU	08 24	4.6	20 37	4.5	02 21	1.3	14 38	1.5
9 W	08 56	4.5	21 17	4.2	02 52	1.5	15 13	1.7
10 TH	09 41	4.3	22 16	4.0	03 32	1.8	16 00	1.9
11 F	10 48	4.1	23 42	3.8	04 25	2.1	17 08	2.1
12 SA			12 18	4.1	05 48	2.3	18 50	2.1
13 SU	01 32	3.9	13 58	4.2	07 36	2.2	20 28	1.9
14 M	03 00	4.3	15 15	4.6	08 59	1.9	21 36	1.4
15 TU	04 00	4.7	16 13	5.0	09 59	1.4	22 29	1.0
16 W	04 48	5.0	17 03	5.3	10 49	0.9	23 15	0.6
17 TH	05 31	5.3	17 47	5.5	11 35	0.6	23 59	0.4
18 F	06 12	5.5	18 29	5.6			12 19	0.5
19 SA	06 51	5.5	19 11	5.4	00 41	0.4	13 01	0.5
20 SU	07 30	5.3	19 51	5.2	01 22	0.6	13 42	0.7
21 M	08 08	5.1	20 31	4.8	02 02	0.9	14 23	1.0
22 TU	08 48	4.8	21 14	4.4	02 42	1.2	15 04	1.3
23 W	09 32	4.5	22 03	4.1	03 23	1.6	15 48	1.7
24 TH	10 26	4.2	23 09	3.8	04 08	1.9	16 41	2.1
25 F	11 37	4.0			05 07	2.2	17 57	2.3
26 SA	00 40	3.7	13 02	4.0	06 35	2.4	19 42	2.3
27 SU	02 03	3.8	14 16	4.1	08 09	2.2	20 53	2.0
28 M	03 05	4.1	15 14	4.4	09 11	2.0	21 40	1.7
29 TU	03 53	4.4	16 01	4.6	09 57	1.7	22 19	1.4
30 W	04 34	4.7	16 42	4.8	10 36	1.4	22 54	1.2
31 TH	05 11	4.9	17 19	4.9	11 12	1.2	23 28	1.0

November 2024

Time Zone UT (GMT)

Date	HEIGHTS ABOVE CHART DATUM							
	High Water				Low Water			
	Morning		Afternoon		Morning		Afternoon	
Time	m	Time	m	Time	m	Time	m	
1 F	05 45	5.0	17 52	5.0	11 46	1.1		
2 SA	06 16	5.0	18 23	5.0	00 00	1.0	12 19	1.1
3 SU	06 44	5.0	18 52	4.9	00 31	1.0	12 50	1.2
4 M	07 10	4.9	19 20	4.7	01 02	1.1	13 21	1.2
5 TU	07 37	4.8	19 51	4.6	01 33	1.2	13 52	1.3
6 W	08 07	4.7	20 27	4.4	02 04	1.4	14 25	1.5
7 TH	08 45	4.5	21 13	4.2	02 39	1.6	15 04	1.6
8 F	09 33	4.4	22 14	4.0	03 21	1.8	15 53	1.8
9 SA	10 38	4.3	23 31	4.0	04 15	2.0	16 59	1.9
10 SU	11 57	4.3			05 29	2.1	18 24	1.9
11 M	00 59	4.1	13 22	4.4	07 01	2.1	19 53	1.7
12 TU	02 19	4.3	14 37	4.7	08 24	1.8	21 04	1.4
13 W	03 22	4.6	15 40	4.9	09 29	1.4	22 01	1.1
14 TH	04 15	5.0	16 34	5.2	10 24	1.0	22 50	0.8
15 F	05 03	5.2	17 23	5.3	11 13	0.8	23 37	0.6
16 SA	05 58	5.3	18 10	5.3	11 59	0.6		
17 SU	06 31	5.3	18 54	5.2	00 21	0.6	12 43	0.7
18 M	07 12	5.2	19 37	4.9	01 03	0.7	13 26	0.8
19 TU	07 53	5.0	20 19	4.6	01 45	1.0	14 08	1.1
20 W	08 35	4.8	21 02	4.3	02 25	1.3	14 50	1.4
21 TH	09 19	4.6	21 49	4.1	03 05	1.6	15 32	1.7
22 F	10 07	4.3	22 45	3.9	03 48	1.8	16 18	2.0
23 SA	11 04	4.2	23 54	3.8	04 36	2.1	17 13	2.1
24 SU			12 10	4.1	05 38	2.2	18 25	2.2
25 M	01 04	3.8	13 17	4.1	06 58	2.3	19 47	2.1
26 TU	02 08	4.0	14 18	4.2	08 16	2.1	20 49	1.9
27 W	03 02	4.2	15 12	4.4	09 13	1.9	21 36	1.6
28 TH	03 51	4.5	16 00	4.6	09 59	1.7	22 17	1.4
29 F	04 35	4.7	16 44	4.7	10 40	1.5	22 56	1.3
30 SA	05 15	4.8	17 25	4.8	11 19	1.4	23 33	1.2

December 2024

Time Zone UT (GMT)

Date	HEIGHTS ABOVE CHART DATUM							
	High Water				Low Water			
	Morning		Afternoon		Morning		Afternoon	
Time	m	Time	m	Time	m	Time	m	
1 SU	05 51	4.9	18 03	4.8	11 56	1.3		
2 M	06 25	4.9	18 38	4.7	00 09	1.1	12 31	1.3
3 TU	06 56	4.9	19 13	4.7	00 45	1.2	13 07	1.3
4 W	07 29	4.8	19 50	4.6	01 21	1.2	13 44	1.3
5 TH	08 04	4.8	20 30	4.5	01 57	1.3	14 21	1.3
6 F	08 45	4.7	21 16	4.3	02 35	1.5	15 02	1.4
7 SA	09 32	4.6	22 09	4.2	03 17	1.6	15 49	1.5
8 SU	10 28	4.6	23 11	4.2	04 07	1.7	16 46	1.6
9 M	11 32	4.5			05 09	1.9	17 54	1.7
10 TU	00 20	4.2	12 43	4.5	06 24	1.9	19 13	1.7
11 W	01 33	4.3	13 57	4.6	07 45	1.8	20 29	1.5
12 TH	02 42	4.5	15 07	4.7	08 58	1.6	21 33	1.3
13 F	03 44	4.7	16 10	4.9	10 00	1.3	22 28	1.1
14 SA	04 40	4.9	17 07	5.0	10 54	1.1	23 18	0.9
15 SU	05 31	5.1	17 59	5.0	11 43	0.9		
16 M	06 19	5.2	18 47	4.9	00 04	0.9	12 29	0.9
17 TU	07 03	5.1	19 31	4.8	00 48	0.9	13 13	1.0
18 W	07 45	5.0	20 12	4.6	01 30	1.0	13 55	1.1
19 TH	08 25	4.9	20 51	4.4	02 10	1.2	14 35	1.3
20 F	09 03	4.7	21 30	4.2	02 48	1.4	15 12	1.5
21 SA	09 42	4.5	22 11	4.1	03 25	1.6	15 49	1.7
22 SU	10 24	4.4	22 57	4.0	04 03	1.8	16 29	1.9
23 M	11 10	4.3	23 51	4.0	04 46	2.0	17 15	2.0
24 TU			12 03	4.2	05 39	2.1	18 12	2.0
25 W	00 53	4.0	13 05	4.1	06 46	2.2	19 22	2.0
26 TH	01 59	4.1	14 11	4.2	08 03	2.2	20 35	1.9
27 F	03 01	4.2	15 15	4.3	09 11	2.1	21 35	1.7
28 SA	03 58	4.4	16 13	4.4	10 06	1.9	22 25	1.6
29 SU	04 48	4.6	17 05	4.5	10 53	1.6	23 10	1.4
30 M	05 32	4.7	17 52	4.6	11 37	1.4	23 53	1.3
31 TU	06 12	4.9	18 34	4.7			12 18	1.3

© Crown Copyright and/or database rights. Reproduced by permission of the Controller of Her Majesty's Stationery Office and the UK Hydrographic Office (www.GOV.UK/UkHO)



THE WIND PROJECT

The Wind Project is a new local charity that has been set up to enable more local people, of all ages and abilities, to enjoy the sport of Sailing on the Salcombe and Kingsbridge Estuary.



Activities

Sailing in Salcombe, sailing, activities on the water, sailing courses, children's taster sessions, and private sailing lessons are available.

Salcombe Dinghy Sailing is an accredited RYA Training Centre, RYA OnBoard Centre and RYA Sailability Centre. We provide informal Sailing lessons, and RYA Courses for children, adults, families, groups, local schools and people with disabilities.

Let's go sailing!

For more information

Email
info@thewindproject.co.uk
or call
07809 556457



The Project aims to encourage wider social participation and engagement in Sailing with the objective of building a stronger, more socially cohesive, local community, where these opportunities are available to all. The Project also aims to have a positive impact on the local and wider economy by broadening people's horizons to the potential employment opportunities in the marine industry. By fostering a love of Sailing and the water, young people who participate in the Project's activities will gain a greater awareness of the varied range of opportunities in the marine sector.



BOAT SALES - MARINE ENGINEERING - GRP REPAIR - WATERSPORTS/CHANDLERY

CDT
MARINE



Buster[®] POWERED BY  **YAMAHA**



EPROPULSION



WWW.CDTMARINE.CO.UK | SALES@CDTMARINE.CO.UK | 01803 228 500

Looking to buy
or sell a boat?

Contact our Salcombe office today!



Protector Boats

Leading the way in quality and performance.



Ancasta

New Boat Sales | Used Boat Sales | Yacht Maintenance

McCONNAGHY

CNB

BENETEAU

LAGOON

PRESTIGE

PROTECTOR

BLUEGAME

scorplan

Your Local Ancasta Broker



Andy Christie

+44 (0)1548 727 130

ancasta.com/Salcombe

CLARK CARS
OF SALCOMBE

*THE
SALCOMBE
TAXI
SERVICE*

**Up to 6
Passengers**

 **07976 551532**

 **01548 842914**

redhotvinyls@yahoo.co.uk

Marine Insurance

Specialist cover for Leisure
& Commercial Marine Insurance

- ✓ Yacht
- ✓ Cruiser
- ✓ RIB
- ✓ Sport
- ✓ Sailing
- ✓ Dinghy



SABRE
INSURANCE SERVICES

Sabre Insurance Services
Telephone: 01548 852853

www.boatquote.co.uk

**Beach times...
are the best times!**



THE Winking Prawn
BEACH CAFE - SALCOMBE

THE Cracking Crab
BEACH CAFE - POLZEATH

Scan me
for more info

www.winkingprawn.co.uk / 01548 842326 / TQ8 8LD

New and used boat sales – Servicing – Repair
Moorings – Storage – Fuel -- Brokerage



Yeoward Boatyards

01548844261 www.yeowards.com



DEVON BOAT CENTRE



SALES • BROKERAGE • STORAGE
SERVICE • REPAIRS • TRANSPORT



BOAT SALES Selection of RIBs, Sportsboats, Cruisers, Day/Fishing Boats (some craft on the water).

Viewing by appointment please

BROKERAGE & PURCHASE

Free collection and storage for all brokerage boats (we also purchase outright)

INDOOR STORAGE & MOORINGS

We have alarmed indoor storage and pontoon moorings available

SERVICE & REPAIRS We service and repair all makes of inboard and

outboard engines plus trailer repairs

BOAT TRANSPORT We deal with the movement of powerboats up to a gross weight of 3500kg

CALL 01548 857444

OR 07857 788422

email sales@devonboatcentre.co.uk

www.devonboatcentre.co.uk

Terms and conditions apply

Salcombe Sea School



RYA POWERBOAT LEVEL 2 COURSE

GIVING YOU CONFIDENCE ON THE WATER
NO EXPERIENCE NECESSARY

PERSONALISED OWN BOAT TUITION AVAILABLE



07866 180180

chris@salcombeseaschool.com

www.salcombeseaschool.com



Giving you peace of mind

The Yard, Island Street, Salcombe, TQ8 8DP

www.batson-creek.com

chris.batsoncreek@gmail.com

07432 120 140

- Secure Storage
- Servicing
- Maintenance
- Launch & Recovery
- Engineering of all makes and models
- Moorings
- Cleaning
- Anti-fouling
- Trailer storage

Contact Chris to chat through your needs

THE WOLF ROCK

BOAT COMPANY

+44 (0) 1548 855751 | WWW.THEWOLFROCK.CO.UK
UNIT 1G, SOUTH HAMS BUSINESS PARK, CHURCHSTOW, DEVON, TQ7 3QH

PROUD MEMBER OF
BRITISH MARINE
LEADING THE INDUSTRY



THE HOME OF FAMILY LEISURE BOATING IN DEVON



FITTED WITH
GARMIN.
ELECTRONICS

BRIG
THE INTELLIGENT BOAT

IRON

IDEA MARINE

UMS

SMARTWAVE
BOAT

JACOB JENSEN

SUZUKI
MARINE

“ A veritable treasure trove of Salcombe's maritime past... ”



**SALCOMBE
MARITIME
MUSEUM**

FREE ENTRY!

Explore Salcombe's shipbuilding past, shipwreck displays, historic photographs, paintings, models and much, much more...

OPEN EASTER TO OCTOBER
10.30am - 12.30pm
2.30pm - 4.30pm

Market Street, below the
Salcombe Information Centre

Registered Charity No. 268909



www.salcombemuseum.org.uk



**STORAGE
SERVICING
MAINTENANCE
SALES
MOORINGS**

CALL MARK:

07779 329887

markr@jr-marine.com



JEANNEAU



JR-MARINE.COM



Nature Calls BOAT TOURS

Exclusive Kingsbridge & Salcombe Estuary Tours

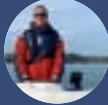
Availability from Sunrise to Sunset (depending on tides)

Skipped small boat tours where you can choose what to explore:

- Quiet tranquil creeks
- Historical local landmarks
- Bustling harbour life
- Wildlife feeding at low tide

- Family friendly
- Dogs welcome
- Max 4 passengers
- Qualified skipper
- SHA Certified boat
- Life jackets included

Ben, your skipper, will show you the hidden gems that most people miss...



Visit our website and social media for our latest tours and availability
www.naturecallsboattours.com



Text to book
+44 (0)755 176 4024

Follow us on social media!

Instagram & Facebook:
@naturecallsboattours



BOOK ON: 07551764024



SELF-DRIVE BOAT HIRE

£195 PER DAY (CALL FOR MULTI DAY PRICES)



Personal Handover & Introduction

Private Moorings

Full Safety Equipment & Video Tutorials



✉ info@salcombelaunchcompany.com 📞 079271 64939

🌐 www.salcombelaunchcompany.com

Salcombe D.I.Y and Hardware

- Gardening ● Plumbing bits ● Toys ● Beach Items
- Camping ● Electrical Goods ● Locks ● Chandlery ● Gas
- Fishing Tackle ● Keys ● Timber ● DIY ● Hardware

Salcombe DIY

Island Street, Salcombe TQ8 8DP

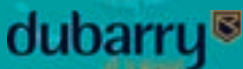
Tel: 01548 843623

THE BOAT STORE

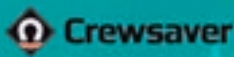


STORE

SALCOMBE



Orca Bay



HOLEBROOK
SWEDEN



CHANDLERY • CLOTHING • LIFEJACKETS • FOOTWEAR
WETSUITS • WATERSPORTS EQUIPMENT

📍 salcombeboatstore

Island Street Salcombe TQ8 8DP 01548 843708



Frogmore Marine Services Ltd



Inside & Outside storage
GRP & General boat repairs
Marine Engineering Inboard & outboard
New boat sales

Email: tamsin@frogmore.uk.net

Tel: 01548 531257

The Office: Frogmore Boat Yard,
Frogmore, Devon TQ7 2NU





BAL TIC WHARF REPAIRS

*Osmosis Treatments, Coppercoat, Insurance Repairs,
Paint Work, Bowthrusters and Routine Maintenance*

01803 867 474
07779 022 708

Please call to discuss your requirements or visit us at
www.balticwharfrepairs.co.uk



St. Peter's Quay, Totnes, Devon TQ9 5EW.

Email: dave@balticwharfrepairs.co.uk



COAST TO COAST WATER SAFETY

WE ARE:

- Established local water safety Team
- Qualified experts in their field
- Passionate about keeping people safe in the water
- Experienced water men and women

WE OFFER:

- Professionally led wild Swim-Ventures
- Event and private water safety cover
- Education
- Consultancy
- Year round lifesaving courses

With some of the UK's most iconic open water swim locations on our doorstep, we offer regular public and private swim ventures around Burgh Island on the River Avon (the Swoosh) and more...

Able to cater for individuals and groups - get in touch to create your own Swim Venture!



SWIM VENTURES



COURSES



WATER SAFETY COVER

info@coasttocoastwatersafety.co.uk
(+44) 07448627184

www.coasttocoastwatersafety.co.uk

[f](https://www.facebook.com/coasttocoastsafety) [coasttocoastsafety](https://www.facebook.com/coasttocoastsafety)
[@](https://www.instagram.com/coasttocoast_watersafety) [coasttocoast_watersafety](https://www.instagram.com/coasttocoast_watersafety)

TWISTED[®]

www.twistedmarine.com

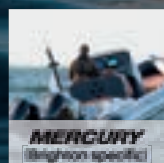
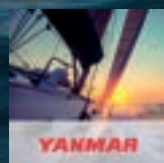
info@twistedmarine.com

01548 843 655

- 
- **BOAT STORAGE**
 - **MARINE ENGINEERING**
 - **NEW AND APPROVED SALES**



WE ARE MAIN AGENTS FOR:



Paddle Board and Kayak Hire/Sales

From £17.50/day



10'6" All-round iSUP
12'6" Touring iSUP
8' Kids All-round iSUP
2 man inflatable kayaks
1 man rigid kayaks
Body boards

Rental Prices From

1 Day - £40
2 Days - £65
3 Days - £80
4 Days - £95
5 Days - £105
6 Days - £105

☎ 07838 394835 ✉ info@northsands.co.uk



www.northsands.co.uk



Love the Sea Gallery Salcombe Nick Philbidge

Salcombe, Sailing and love of the Sea



Love the Sea showcases the original & often impressive images of marine photographer & working artist Nick Philbidge. Combining photography & handiwork with one breath of air during a passion for Salcombe, Sailing & love of the Sea.



Our gallery will feature your home with Salcombe coastal living. A blend of nautical pictures & New England style, from stunning lightboxes to easy-on colour throws.

Call Nick or Tina: 01548 844691 / 07710 932482
33a Fore Street, Salcombe TQ8 8JG or Ferry steps
www.nickphilbidge.com

dickandwills

Waterside Grill

Eat drink
and enjoy the view!

Fore Street Salcombe TQ8 8JG
01548 843408

dickandwills.co.uk

Looking to buy
or sell a boat?

Contact our Salcombe office today!



Scorpion RIBs

British built, world class.



Ancasta

New Boat Sales | Used Boat Sales | Yacht Maintenance

McCONAGHY

CNB



LAGOON

PRESTIGE

PROTECTOR

BLUEGAME

scorpion

Your Local Ancasta Broker



Andy Christie

+44 (0)1548 727 130

ancasta.com/Salcombe

INFO@SALCOMBEWATERSPORTS.COM
01548 843182



SALCOMBE
WATERSPORTS

WWW.SALCOMBEWATERSPORTS.COM
BOOK ONLINE TODAY



STAND UP PADDLEBOARDING | KAYAKING | RYA WINDSURFING | RYA POWERBOAT LEVEL 2

LEARN | HIRE | EXPLORE | SAFETY BOAT | FAMILIES WELCOME

WEEKLY SUMMER KIDS' CLUB | HOLIDAY MULTI-ACTIVITY DAYS



SALCOMBE
FISHING ADVENTURES

FAMILY SEA FISHING FUN
2HR TRIPS FROM £30PP
BOOK ONLINE : WWW.SALCOMBEFISHING.CO.UK

BOOK TRIPS



YETI

@ STONES
BOATYARD



The UK's biggest YETI stockists,
offering a huge range of
YETI coolers, Rambler drinkware,
accessories and much more.

Yalton, East Portlemouth, TQ8 8PA. 01548 844122



Stonesboatyardsalcombe

casual dining – seafood dishes – family friendly – dog friendly



South Sands

SALCOMBE

01548 845900
SALCOMBE | BOLT HEAD | TQ8 8LL
www.southsands.com



Customer car park – walk/catch South Sands Ferry to/from Salcombe – come by boat!



Yeoward Boatyards

01548844261 www.yeowards.com



**New and used boat sales – Servicing – Repair
Moorings – Storage – Fuel -- Brokerage**





SALCOMBE RIGGING SERVICES



UNIT 2, SCHOONER COURT, GOULD ROAD, SALCOMBE, TQ8 8FQ

07944 197721

info@salcomberiggingsservices.com

www.salcomebriggingservices.com



Salcombe and the surrounding areas

HARKEN



SELDÉN

STA-LOK

spinlock

Marlow

STANDING & RUNNING RIGGING

MAST & RIGGING INSPECTIONS

RUNNING RIGGING INSPECTIONS

SAILING SYSTEM UPGRADES

DINGHY RE-FITS

WINCH, DECK GEAR AND FURLING SYSTEM SERVICE

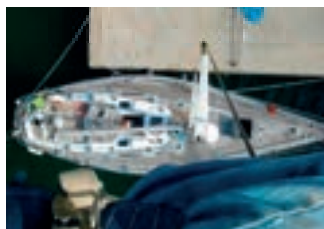
SAIL REMOVAL, SERVICE, REPAIR AND LAUNDRY

BESPOKE SPLICING AND MOORING LINE PACKAGES

FREE SPLICING




| Annual deep-water moorings | 30T hoist | Hard standing & undercover storage | Shore power |
 | GRP & wood repairs | Seasonal dinghy & car parking | Engineering & electronics |



01548 843580 | info@wintersmarine.co.uk | Winters Marine, Lincombe Boatyard, TQ8 8NQ | www.wintersmarine.co.uk

AP MARINE SURVEYS
 Yachts and Motor Craft




- Pre-Purchase & Insurance Surveys
- Valuations & Tonnage Measurements
- Damage Assessment
- MCA Code Compliance 'Level-2'
- Engine & Drive Inspections
- Accompanied Viewings
- General Consultancy

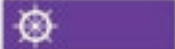
Alan Plummer

Karenza
 Grenville Road
 Salcombe
 Devon
 TQ8 8BJ
 01548 843552
 07557 145566

www.apmarinesurveys.co.uk
alan@apmarinesurveys.co.uk




YDSA
 PROFESSIONAL YACHT
 DESIGNERS & SURVEYORS



**ACCREDITED
 MEMBER**

Richard Lewis
 Marine Electrical &
 Electronic Engineers



07770 600 432
richard@rlme.co.uk
 (01548) 843 223
 Lincombe Boatyard, Salcombe, TQ8 8NQ



Quality Used Boat Sales



Selling your boat? Make us your first port of call...

-  Affiliated offices throughout the UK, Europe and beyond
-  Highly experienced crew – nearly 1000 boats sold in the last 15 years
-  Extensive UK, Europe and world-wide marketing
-  Exciting new marina location

T: 01803 834864

E: sales@nybdartmouth.com

www.networkyachtbrokers.com

Noss on Dart Marina, Bridge Road, Kingswear Dartmouth, Devon TQ6 0EA



"A Warm welcome to all
visiting Yachtsman"

More than just a Sailing Club

Fabulous Location | Bar | Panoramic Views
over the Harbour | Terrace | Shower Facilities
| Free Wifi | Running Mooring | Private Dining
| Events | Walk-ins



SALCOMBE YACHT CLUB

www.salcombeyc.org.uk | 01548 842593

SALCOMBE GIN®




EVERY BOTTLE SOLD MAKES
OUR OCEANS HEALTHIER

1% OF EVERY BOTTLE SOLD IS DONATED TO THE
MARINE CONSERVATION SOCIETY TO HELP PROTECT
AND REGENERATE PRECIOUS OCEAN HABITATS

ONE
PERCENT FOR THE
OCEAN

THE BOATHOUSE, ISLAND STREET, SALCOMBE, TQ8 8DP

 01548 843791

 **Salcombe Harbour VHF CHANNEL 14**

 **Harbour Taxi VHF CHANNEL 12**

