

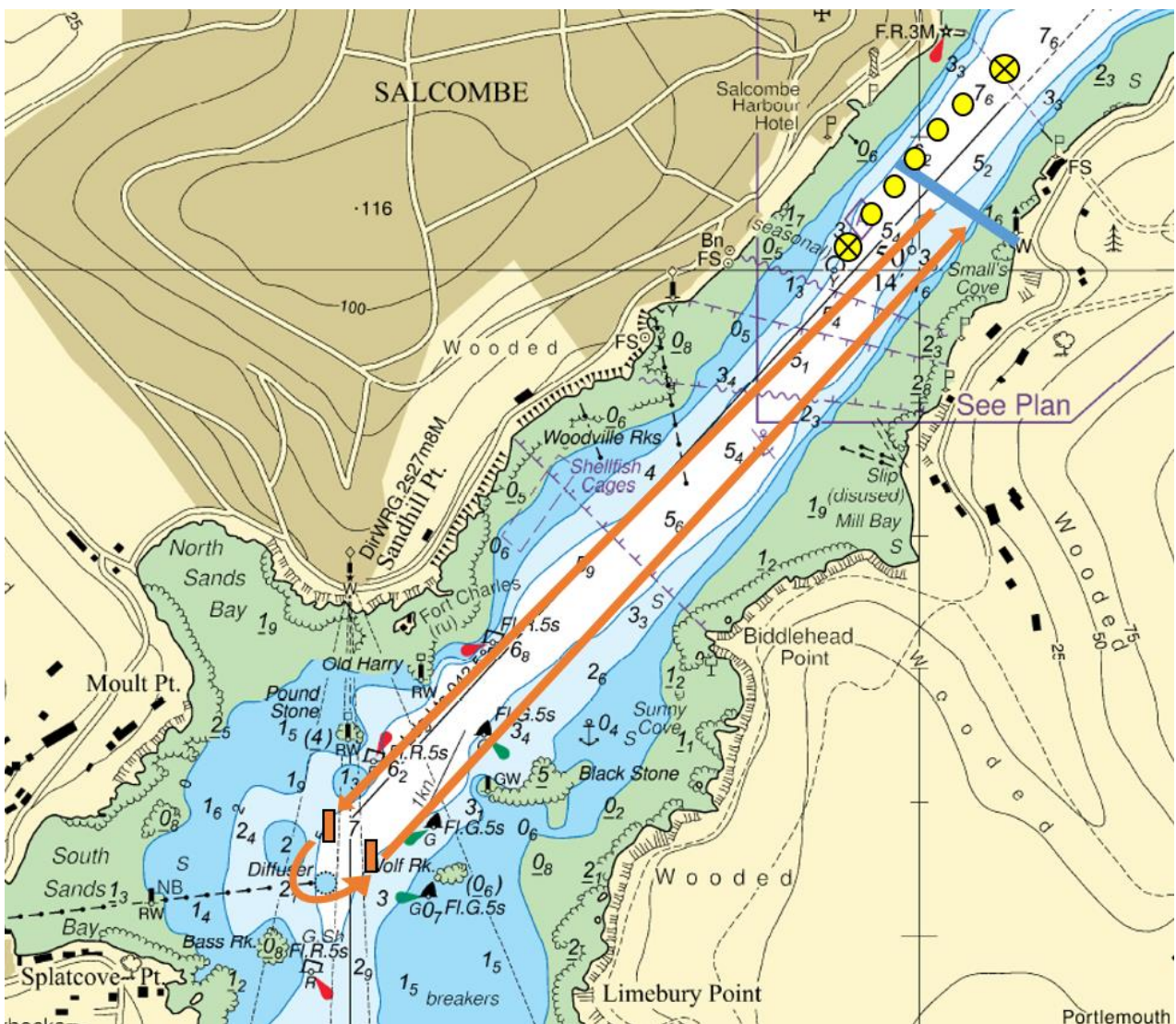
## SOUTH HAMS DISTRICT COUNCIL

### SALCOMBE HARBOUR – KINGSBRIDGE ESTUARY

#### LOCAL NOTICE TO MARINERS NO 10 OF 2024

### **SALCOMBE ESTUARY ROWING CLUB: GIG REGATTA**

On Sunday 16<sup>th</sup> June Salcombe Harbour – Kingsbridge Estuary will host the annual Gig Regatta in the main deep-water fairway off Salcombe town 11:00-17:00. Racing will be conducted from the Salcombe Yacht Club start/finish line to marks toward the harbour entrance, rounding to port in an anticlockwise direction and returning north east toward Mill Bay on the East Portlemouth side of the channel. Please see chart below. Positioning of the seaward marks is subject to change depending upon the conditions. A maximum of 12 gigs are expected to be racing at any one time between 11:00 and 17:00.



Salcombe Harbour Authority may activate the Racing Dinghy Free Fairway (LNTM No 2) if the harbour is busy with non-racing traffic. This will allow the passage of other craft past the start line on the town side of the channel inside the yellow buoys pictured. Please be aware that vessels navigating in and out of the harbour are still likely to encounter the gig racing, specifically between the seaward marks. Please give the racing a wide berth where possible.

Communications will be broadcast on VHF Ch 14 and in person from the harbour launch where necessary.

Cancel this LNTM 17th June 2024

C Sims-Stirling  
Salcombe Harbour Master

[salcombe.harbour@swdevon.gov.uk](mailto:salcombe.harbour@swdevon.gov.uk)  
[www.salcombehairbour.co.uk](http://www.salcombehairbour.co.uk)

Harbour Office  
Whitestrans  
Salcombe  
Devon  
TQ8 8BU

11th June 2024